



2013-2014 Activities Calendar

Education is the most powerful weapon which you can use to change the world
-Nelson Mandela



School Board Members

Melissa Bahr	444-9281
Bill Faver	586-2876
Jeff Haack.....	444-8127
Carol L. Johnson	751-0415
Ann Long Voelkner	333-0510
John Pugleasa	333-3903

District Offices

Superintendent of Schools <i>Dr. James Hess</i>	333-3100 ext. 105
Director of Business Services <i>Chris Leinen</i>	333-3100 ext. 125
Dir. of Curriculum & Administrative Services <i>Kathy Palm</i>	333-3100 ext. 103
Director of Human Resources <i>Jordan Hickman</i>	333-3100 ext. 113
Director of Special Education <i>Stephanie Hubbard</i>	333-3100 ext. 104

Central Elementary	333-3220	<i>Patricia Welte, Principal</i>
Horace May Elementary	333-3240	<i>Ami Aalgaard, Principal</i>
J.W. Smith Elementary	333-3290	<i>Patricia Welte, Principal</i>
Lincoln Elementary	333-3250	<i>Jason Luksik, Principal</i>
Northern Elementary	333-3260	<i>Wendy Templin, Principal</i>
Paul Bunyan Center	333-3119	<i>Kathy VanWert, Principal</i>
Solway Elementary	467-3232	<i>Tami Wesely, Principal</i>

The mission of the Parent Involvement Committee is to promote effective school—family—community partnerships.

Why Become Involved?

- When parents are involved, students **achieve more**, regardless of race, economic and social status, or the parents' level of education.
- The **more** parents are involved, the higher the student achievement.
- With parent involvement, **success** for students with disadvantages **improves**. In addition, children who are **the farthest behind make the greatest gains**.
- The benefits of parental involvement are significant **at all ages and all grade levels**.
- Students who are failing **improve dramatically** when parents become active partners in their education.

Schools and Departments

Bemidji Middle School	333-3215	<i>Drew Hildenbrand, Principal</i>
Bemidji High School	444-1600	<i>Brian Stefanich, Principal</i>
Lumberjack High School	444-1600	<i>Brian Stefanich, Principal</i>
Bemidji Alternative Ed. Center	333-3299	<i>Tami Wesely, Principal</i>
Bemidji BYLaW	333-3478	<i>Tami Wesely, Principal</i>
First City School	333-3458	<i>Tami Wesely, Principal</i>
Oshki Manidoo	751-6553	<i>Tami Wesely, Principal</i>

Parent Involvement

How to Become Involved:

- Provide a safe and loving home environment.
- Make sure your child is well fed and rested.
- At home, help with homework and class projects, teaching responsibility to attend school regularly and have their work in on time.
- Attend school events, such as concerts, plays and ceremonies, and show appreciation and support.
- Volunteer to help in the classroom – for special events or on a regular basis.
- Join the PTA/PTO, and/or serve on a school or district committee.
- Your child's teacher is your best resource. Be in contact with them throughout the year.
- Attend Parent/Teacher Conferences.
- Ask your child about his/her day!

Transportation Department	333-3225	<i>Greg Liedl, Coordinator</i>
Community Education	333-3284	<i>Sandy Eberhart, Coordinator</i>
Adult Basic Education	333-3299	
Early Childhood / Family Ed	333-8329	
Adult Enrichment, Aquatics, Billing, Kids & Co., School-Age Care, and Youth Services	333-3284	
Indian Education	333-3215	<i>Vince Beyl, Coordinator</i>
	ext. 6151	
Athletic / Activities Department	444-1600	<i>Troy Hendricks, Coordinator</i>
	ext. 3315	
Early Intervention Program	333-8330	<i>Kathy VanWert, Principal</i>

August/September 2013

Sun	Mon	Tue	Wed	Thu	Fri	Sat
	26 NO SCHOOL Teacher Day BHS BTS Open Hse CC @ Moorhd Inv	27 NO SCHOOL Orientation Day Sccr B @ DL Swim G H Brainrd VB H Perham	28 NO SCHOOL Teacher Day	29 NO SCHOOL Teacher Half-Day District Data Rtrt FB 9 @ TRF FB V @ GR Sccr G @ DL VB @ DL	30 NO SCHOOL	31
1	2 NO SCHOOL Labor Day	3 Students' First Day of School FB B @ DR Sccr B <u>H</u> GR Sccr G @ EGF VB H TRF	4	5 CC @ DL Inv FB 9 H Bagley Sccr B @ EGF Sccr G H Crxton VB @ Moorhd	6 BHS BTS Dance FB V H SR-R	7 Swim G H Inv
8	9 AIMSweb (K-7) Test Window Opens Sccr B H DL Swim G H Tri VB H Brainrd	10 FB 9 H Dlth E Sccr G H W-H-A	11	12 CC @ LF Inv FB B H TRF Sccr G H GR VB H Nevis	13 FB V @ FF	14 Sccr B H W-H-A Sccr G H Moorhd Swim G @ Hibbing
15	16 School Board Mtng FB JV @ Brainrd	17 CC @ Bagley Inv FB 9 H Crxton Sccr G H Dlth E Swim G @ Warr VB @ Roseau	18	19 Early Child Screen FB B H Moorhd Sccr B @ Hibbing Sccr G H EGF	20 AIMSweb (K-7) Test Window Closes FB V @ Sartell VB @ AV Inv	21 CC @ Milaca Inv Early Child Screen Sccr B H Brainrd Sccr G H Brainrd VB @ AV Inv
22	23 BHS Academic Awards Ceremony Homecoming Week FB B H Brainerd Sccr G @ GR	24 Sccr B H Moorhd Swim G @ PR VB H Hibbing	25 District Staff Dev. Grants Due MAP R/M (2-10) Test Window Opens	26 CC @ FF Inv FB 9 @ DL Sccr B H Crxton Sccr G @ Moorhd	27 BHS HC Dance FB V HC Rocori VB @ Hpk Inv	28 CC @ U of M Inv Sccr B H Sartell VB @ Hpk Inv
29	30 NO SCHOOL Staff Development FB 9 @ Brainrd FB B H DL Sccr B H EGF Sccr G @ Crxton					@ = Away Games <u>H</u> = Home Games

Food Service



District 31 participates in the National School Lunch and School Breakfast Programs. Lunches and breakfasts are served at all schools. Participation in these programs is voluntary. The price of breakfast for elementary, middle school, and high school students is \$1.50.

Breakfast for students (K-12) eligible for free or reduced price meals, is free of charge.

Elementary lunch will cost \$2.35, the middle school lunch will be \$2.55, and the senior high lunch is \$2.65. Students (K-12) eligible for reduced price meals will need to pay 40 cents for lunch.

FREE AND REDUCED PRICE BREAKFAST AND LUNCH APPLICATION forms are sent out to the district residents in August. Applications **MUST** be completed and returned **EACH YEAR** to determine eligibility. **Please return these applications as soon as possible to the food service office at 502 Minnesota Ave. N.W.** Benefits of the program cannot be given to the students until applications have been reviewed for eligibility. If you do not receive an application, please secure one from any of the schools' offices. Application for free and reduced priced meals can be made at any time of the school year, if the need arises. **Applying for the program is important. Schools receive funding for educational programs based directly on the number of students who qualify for free or reduced price meals. These funds are used to provide additional educational support and opportunities for students in every school.**

The district uses an Individual Meal Accounting System in all the schools where each student has their own individual account. The PIN (Personal Identification Number) they are given remains with them for access to their account throughout all of their school years in the district.



Meal accounts are debit accounts; therefore there must be money in the account for the student to use it. Charging of meals is discouraged in any of the Bemidji Schools. Since the entire district uses the Individual Meal Accounting System, accounts for students with positive or negative balances will be credited for the next school year. Positive balances from one sibling will be transferred to another sibling to zero out a negative balance. Students graduating from high school may have their account balances transferred to a younger sibling or another student by calling the Food Service Office at: 333-3100 ext. 141. Refunds from accounts will only be sent if the balance is \$5.00 or more. A request for a refund must be made by the parent/guardian when a student is leaving the district.

Elementary menus, breakfast and lunch, are sent home monthly with the students. All menus are analyzed as to their nutrient and caloric value to assure they meet the daily requirements for students of a specific age group. Menus and food service program information are available on the district Web page: bemidji.k12.mn.us/Parent/foodservice.html We also encourage the use of Family Access to secure knowledge of your child's meal account, as well as other school information.

Register for Family Access by visiting:
http://www.bemidji.k12.mn.us/Parent/family_access.html

Click the "Register" link on the left side of the screen, fill in the request information, and click "submit form" to start the process. A district representative will contact you to provide your username and password for system access.

You may also receive food service email notifications for "low balance alerts" by having a current email address on file at your school. Please update your email address when it changes.

Questions or concerns regarding the food service programs can be directed to the food service office at 333-3100 ext. 141 or 142.

Transportation

The Bemidji Area School District covers 833 square miles. Each day we transport over 5000 students on more than 60 routes to seven elementary schools, one middle school, one high school, three non-public schools and three charter schools. Including athletic and activity trips, a total of 1,100,000 miles are traveled each year.

The mission of the Transportation Department is safe and responsible transportation for students to and from school and related events. Bemidji Area schools provide initial classroom and behind the wheel training for new drivers. In addition, several hours of continuing education and review are given each year to all Transportation staff.

A school bus is the safest form of transportation available. Safe student transportation is a community effort. All users of the roadways need to be aware of the laws and rules pertaining to school buses, especially in loading zones where most accidents occur. This knowledge shared with all members of your family will make this a safe and productive school year. Questions or comments concerning student transportation may be directed to Greg Liedl, Coordinator of Transportation Services, 333-3225.



October 2013

Sun	Mon	Tue	Wed	Thu	Fri	Sat
		1 BHS Conf. VB <u>H</u> EGF	2	3 District Staff Dev. Grant Review BHS Ramp-Up Conf FB 9 <u>H</u> GR Sccr G <u>H</u> DL	4 Sccr B @ Moorhd VB @ GR	5 CC @ Alex FB V @ Brainrd Swim G @ Richfield
6	7 FB 9 <u>H</u> EGF FB B @ Crxton Sccr B <u>H</u> Hillcrest	8 Curriculum Meeting Early Child Screen Swim G @ DL VB @ D-G-F	9	10 Swim G <u>H</u> Moorhd VB <u>H</u> W-DC	11 FB V <u>H</u> Alex VB @ SM-A	12 FB B/JV @ Dlth E Swim G <u>H</u> TBA VB @ SM-A
13	14 FB 9 <u>H</u> I Falls FB B @ GR	15 CC <u>H</u> Inv Swim G @ Foss VB @ Dul E	16 FB V <u>H</u> Moorhd	17 NO SCHOOL Education MN VB @ TRF	18 NO SCHOOL Education MN	19
20	21 School Board Mtng	22 BHS ASVAB Tests	23	24 CC 8 AA Final	25 MAP R/M (2-10) Test Window Closes Swim G @ GR	26
27	28 BHS Choir Concert	29	30	31		

Community Education

“Life Long Learning Opportunities for All”
www.bemidjicommunityed.com

Bemidji Area Schools has been a provider of Community Education programs for over 35 years. Our staff and community advisory council work together to provide programming to all area residents. Check out our Website at: www.bemidjicommunityed.com or call for a brochure at 333-3284 ext. 1. For updates & current information you may also join our Facebook page.

Adult Basic Education (ABE)

A free program for adult learners age 16 and older not enrolled in any other E-12 program. Individuals can: improve skills; obtain their GED; prepare for college; improve employability; gain job skills; learn how to interview/apply for jobs; study English as a second language; learn basic computer skills; and obtain life skills. *For more information, please call 333-3557 ext. 220.* We are located at 1426 Bemidji Avenue N, Suite 1.

Adult Enrichment Programming

Community Education brochures are available in August and January containing over 100 Enrichment classes or activities to choose from, such as: defensive driving, yoga, volleyball, basketball, zumba, fencing, arts & crafts, dog obedience, world languages, and photography, online learning, and much more. Classes are added throughout the year. Visit our website at: www.bemidjicommunityed.com

For additional information or to teach a class, call Jen Belisle, 333-3284 ext. 3.

Aquatics

The aquatic program offers several classes during the school year and summer months. Offerings include: swimming lessons for all ages and abilities, water aerobics, lap swimming, open swimming, Moms in Motion, scuba diving, and USA Swim Club. *For more information call “Woody” Scott Leindecker, 333-3284 ext. 5.*

Bemidji 21st Century Community Learning Center

The Bemidji Learning Community is a free program with a mission to support academic success of students throughout their school years. Students selected will receive academic instruction in specific areas of need and will also learn about study skills, social skills, and participate in enriching activities such as swimming, other sports, arts & crafts, and field trips. *Contact John D. Buckanaga at 333-3284 ext. 8 for more information.*

Early Childhood Family Education/School Readiness

ECFE/SR provides activities and classes for families with preschool age children. A sliding fee scale makes this program accessible to everyone. Most classes are held at the Community Services Center, 616 America Avenue. *For more information call 333-8329.*

GED Testing

The GED test makes it possible for individuals to earn a certificate of General Education Development. Those who haven't graduated from high school or aren't currently enrolled in high school may be eligible to take the test. The GED test is given on the first and third Wednesday of every month in Bemidji. Test dates are subject to change. As of January 1, 2014 the test will change. It will be more challenging. Get your GED now—we can help. *Contact Bemidji Adult Education at 333-3557, or John J. McRae at 333-3284 ext. 6.*

Fastrak Program

ABE, CEP and DEED are offering a grant program which allows adults to receive free credits at Northwest Technical College. All tuition, books and supplies are covered. Anyone with a high school diploma or GED is eligible. Call 218-333-8216 for more information.

Kids & Company School Age Care & SummerKids

We provide a safe, caring environment in which children explore art, games, crafts, computer technology, gym and outdoor activities, plus homework assistance and tutoring after school until

5:45 p.m. The SummerKids summer program is available 8-10 weeks during the summer for youth in grades K-7. Options for attendance give families flexibility full or part-time. *Please call Susan Shelquist, 333-3284 ext. 9, for more information.*

Online Learning

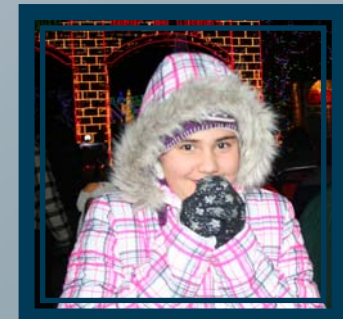
Ed2Go is our newest learning opportunity. Go to www.ed2go.com/bemidji and check out more than 250 courses. All are instructor-facilitated. Classes are very diverse and include CEU documentation. Ed2Go also provides career certificate programs designed to provide the skills necessary to acquire professional level positions for many in-demand occupations. Visit: www.gatlineducation.com/bemidjicommunityed

Youth Enrichment/Youth Services

The activities and programs designed for youth create safe, non-competitive, fun, and a caring environments in which youth can enhance their physical, emotional, and intellectual development. *For more information call John D. Buckanaga, 333-3284 ext. 8 or John McRae at 333-3284 ext. 6.*

Early Childhood Screening

All children ages 3-5 are invited for screening. Screenings are **FREE** and are offered monthly at the Early Childhood Office in the Community Service Center Building. This screening is for **ALL** children regardless of their developmental stage or abilities. Your child's hearing, vision and developmental stage will be screened and the information is shared with parents/guardians. Each child receives a free tee shirt. Minnesota law requires that all children be screened prior to attending kindergarten. *For more information, call 333-8329.*



November 2013

Sun	Mon	Tue	Wed	Thu	Fri	Sat
					1	2
3	4	5 Early Child Screen	6 End of First Term Early Child Screen GRAD Writing Retest	7 NO SCHOOL Conferences BHS Fall Musical Early Child Screen	8 NO SCHOOL Conferences BHS Fall Musical Hcky G H EGF Swim G H Section	9 BHS Fall Musical Swim G H Section
10	11 BB B H TBA	12 BHS Band Concert Hcky G H GR	13 Student Early Release	14	15 Hcky G H TRF	16
17	18 School Board Mtng BB G H TBD	19 Hcky G @ Roseau	20	21 Hcky G H I. Falls	22 BB B @ DL	23 Hcky B H SC Ap
24	25	26 BB B H TRF Hcky B @ GR Hcky G H Warr	27	28 NO SCHOOL Thanksgiving Holiday	29 NO SCHOOL Thanksgiving Holiday BB B H No. Clssc Hcky G @ SC Cth	30 BB B H No. Clssc Hcky G @ SC Cth

Specialized Programs

ISD #31 offers a complete range of programs for students with unique education needs.

Programs for Students with Disabilities

Bemidji Area Schools (ISD #31) special education services are provided to over 1000 identified students. A full array of services is in place for: Speech and Language Impairments, Developmental Cognitive Disabilities (Mild to Moderate and Moderate to Severe), Physically Impaired, Deaf and Hard of Hearing, Visually Impaired, Specific Learning Disabilities, Emotional or Behavioral Disorders, Deaf-Blind, Other Health Disorders, Autism Spectrum Disorders, Developmental Delay, Traumatic Brain Injury, and Severe Multiply Impaired. Services to these identified children are provided in a variety of educational settings, with every effort made to serve all students in their Least Restrictive Environment (LRE). Educating students in special settings occurs only when assessments and planning determine that the student's needs require such a setting for service. Inclusion is a word often heard with regard to special education programs. Inclusion means involving students with special needs in those areas of development which is the typical environment in which most children receive their education. Special education programs in Bemidji Area Schools may begin identifying students at birth. Services provided are based on identified needs and goals, as identified through assessment, and are listed in each student's Individual Education Plan (IEP), IFSP (Individual Family Service Plan) or IIP (Individual Inter-agency Intervention Plan).

For additional information, contact the building principals at individual schools. You may also contact Jennifer Kondos at the Early Intervention

Center at 333-8330, Susan Flicek (Due Process Facilitator) at 333-3119, or Stephanie Hubbard (Director of Special Education) at 333-3100.

Alternative Education Center

The Bemidji Alternative Education Center (AEC) provides year-round education toward a high school diploma for students age 16 through adult. Students and their instructor develop a learning plan which is based upon an initial assessment, that best fits their course needs and learning styles. Students work independently and meet with teachers in the various subject areas. This individualized approach helps all students succeed in their education. For additional information, call 333-3299 or visit our Website at: www.bemidji.k12.mn.us/AEC/HomePg.htm

Bemidji Educational Advocacy Program

Providing outreach and support for youth and families that are in a homeless situation, this program offers youth and family advocates that work to ensure: enrollment, attendance, academic progress, stability, security, and a safe place to grow as families pursue stable housing. This program, along with area providers and shelters, maintains membership on the Homelessness Awareness Committee—a committee that aims to provide education to the community and to schools on issues related to homelessness. We ask you to assist the homeless through community service projects in your school. For assistance with enrollment, school records, transportation, medical records, and ideas for school and community service projects, call Angie Lauderbaugh at 333-3290.

Bemidji Youth Learning and Working

Bemidji Youth Learning and Working (BYLaW) is a Special Education, Level 4 E.B.D. program providing full time academic services to students who have not been successful in traditional schools. Students are

provided an individualized education program tailored to their specific needs. Students, families, and staff are vital members of each student's planning team. The goal of the BYLaW Program is to assist each student in becoming a productive and contributing member of his/her community.

First City School

Instructional programs are provided to non-resident and resident students attending the Northwest Minnesota Juvenile Center year-round. If you would like additional information contact Tami Wesely, Principal, at 333-3458.

Lumberjack High School

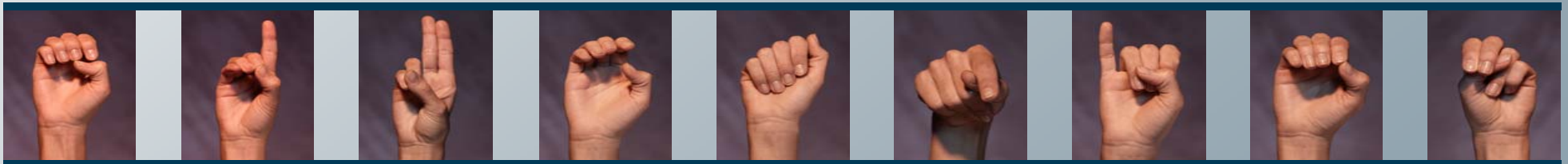
The Lumberjack Alternative High School was organized in 2003 as a school-within-a-school at Bemidji High School. The goal of this alternative program is to meet the needs of more Bemidji students and help them earn a high school diploma. Lumberjack focuses on serving individualized curriculum and a caring staff, therefore expecting more students to stay in school and earn their high school diploma.

New Spirit Center School—Oshki Manidoo

Instructional programs are provided to non-resident and resident students attending the Oshki Manidoo Treatment Center. If you would like additional information, please contact Tami Wesely, Principal, at 333-3478.

Title I

Central, J.W. Smith, Lincoln, and Solway Schools offer school-wide Title I programs for grades Kindergarten through 5. Title I teachers and paraprofessionals provide supplemental help to students in reading and/or mathematics. For more information contact your building principal or Kathy Palm at 333-3100 ext.103.



December 2013

Sun	Mon	Tue	Wed	Thu	Fri	Sat
1	2	3 BB B H I Falls BB G @ TRF	4 District Staff Dev. Grants Due	5 BB G H GR Hcky B H Moorhd Hcky G @ GR Wrestling @ TRF	6 Gymnastics @ PRA Hcky B @ SC T	7 BHS Winter Formal BB B H Buffalo Swim B @ SC-A Wrestling @ Foss
8	9	10 BHS Conf. Curriculum Meeting BB G @ Hibbing Gym H DL Hcky B @ Warrd Hcky G H Crxton Swim B H TRF Wrestling @ DR	11	12 District Staff Dev. Grant Review BHS Conf. Hcky B @ TRF	13 BB B @ Rogers BB G H SM-A Gym H LF Wrestling @ Brainrd	14 BB B @ Mont Hcky B H Mont Hcky G @ Warr Wrestling @ Brainrd
15	16 School Board Mtng BHS Choir Concert	17 BB B @ Brainrd BB G H Moorhd Hcky B @ EGF Hcky G @ TRF Swim B @ PRA	18	19 BB B H EGF BB G @ I Falls	20 Wrestling @ CL-B	21 Hcky B @ Brainrd Hcky G H Brainrd Wrestling @ CL-B
22	23 NO SCHOOL Winter Break	24 NO SCHOOL Winter Break	25 NO SCHOOL Winter Break	26 NO SCHOOL Winter Break Hcky B @ Dulth D	27 NO SCHOOL Winter Break BB G @ Cloquet Hcky B @ Dulth D Swim B @ Brainrd	28 BB G @ Cloquet Hcky B @ Dulth D
29	30 NO SCHOOL Winter Break	31 NO SCHOOL Winter Break				

Kindergarten and Elementary Programs

There are seven elementary schools in the district which serve students in grades K-5: Central; Horace May; J.W. Smith; Lincoln; Northern; the Paul Bunyan Center and Solway. Pages 9-12 of this publication feature the District Elementary Student-Parent Handbook, which provides information that all students and parents need to know. Names and phone numbers of all elementary schools are found on the inside of the front cover of this publication.

Registration

The registration office is located at 502 Minnesota Ave. NW, Bemidji. When registering a student for school, please bring with you their birth certificate and immunization records. Please call Jolene Enerson with questions, at 333-3100 ext. 131; or Karin Revering at ext. 134.

Bemidji Elementary Handbook

Introduction

Welcome to a new school year. We will make every effort to provide a valuable school experience for your child/children. This handbook provides information common to all elementary schools in the district. Your school may distribute additional information which is specific for your school. If you have any questions regarding this handbook, please contact your school principal for clarification.

Requirement for Admission

A child must be five years of age on or before September 1 of the current school year to enter kindergarten. First grade children must be six years of age on or before September 1 of the current school year or have been promoted from an acceptable kindergarten. Birth or baptismal certification must be shown at the time of registration to verify the date of birth as well as immunization records. Registration into the Bemidji Area Schools can be done at the District Office at 502 Minnesota Ave. NW. Early Childhood Screening is required before children can attend any Minnesota public school. Contact the Early Childhood Office for more information at 333-8334 or 333-8329.

Health Problems

The school should be informed if your child has a special health need. It is helpful to know what medical treatment has taken place and what adjustments must be made in the child's program to meet his/her special needs. The District School Nurse is available to assist and give counsel to parents and teachers in regard to a pupil's health problem. Each school has a health office attended by a health paraprofessional to provide onsite care of ill or injured students. The school should be notified if a student is absent for health reasons.

Immunization Policy

Minnesota law requires all students enrolled in Minnesota schools to have up-to-date immunization records. Immunization policy requires that parents present an up-to-date immunization record at the time of registration. Registration will not be done without this information.

Minimum requirements include:

- Preschool: 4 DTaP, 3 Polio, 1 MMR, 1 HIB, and 1 Varicella*
- Kindergarten through Age 6: 5 DTaP, 4 Polio, 2 MMR, 3 Hepatitis B, and 2 Varicella*
- Age 7 through Grade 6: 3 DTaP, and 3 Polio (at least)
- Grades 7 through 12: 3 HepB, 3 DTaP (at least) plus a Tdap at age 11-12, 3 Polio (at least), 2 MMR, and 2 Varicella*

**Varicella (or parent documentation of having Chicken Pox: MM/YY).*

(Exception: If the fourth dose of DTaP and the third dose of Polio were given after the fourth birthday, only four (4) doses of DTaP and three (3) doses of Polio are needed. Students registering in first grade who are seven years old will follow the second grade guideline.)

(Special Exemptions: Exemptions for Conscientious or medical reasons need to be signed and notarized on the Minnesota Department of Health immunization form. The District Office has the immunization form and will notarize for free when parents come in person to fill out the form.)

Medication Policy

Whenever possible, medication should be given at home. When prescription medication is necessary during school hours, district policy (SBR 700-60-4R) requires:

- a. Written order from a physician (pharmacy label is not acceptable) must include the student name, name of medication, medication dosage, and time to be given.
- b. A new doctor's order and consent form will be required if any changes are made (i.e., increase or decrease of a dosage or times to be given) or if the medication is discontinued.
- c. Written authorization of parent/guardian to follow doctor's orders should include the student name, medication and dosage, time to be given, parent signature and date.
- d. New doctor's medication orders and parent or guardian consent form are required at the beginning of each school year.
- e. Parents/Guardians of students requiring immediate medical attention for allergic reactions to insects or allergens should complete the necessary forms sent to them. An emergency plan will be initiated. Emergency medication will be provided by the parent/guardian.

Non-prescription over-the-counter medication (OTC) requires:

- a. Written parent permission including the date, student's name, name of medication, time to be given, and dosage.
- b. These medications must be furnished by the parent or guardian in an original container.
- c. A doctor's order is required for any OTC dosage beyond the manufacturer's recommendation.
- d. Complementary, holistic medications will be considered as OTC medication and follow OTC requirements.

Questions regarding this policy should be directed to the District School Nurse at 333-3100 ext 209.

Parents should deliver medication to the school. Students should not be allowed to bring medication to school on the bus! (Exception: Students who have a doctor's orders to carry an EpiPen®, inhaler, or insulin).

No medication is supplied by the schools for student use.

January 2014

Sun	Mon	Tue	Wed	Thu	Fri	Sat
			1 NO SCHOOL Winter Break	2 BB B @ Moorhd Swim B H GR	3 BB G @ DL Hcky G H FF Swim B @ DL Wrestling @ C-I Tri	4 BB G @ Cloquet Gym @ PRA Inv. Hcky B H Sartell Swim B @ DL Wrestling @ Buffalo
5	6 AIMSweb (K-7) Test Window Opens Swim B @ DL	7 BB B @ TRF BB G H TRF Hcky B @ Crxton Hcky G H Moorhd Wrestling @ GR	8	9 BB G H Dulth E Wrestling @ Hibbing	10 BB B @ Dlth D Gym @ Alex Hcky G @ NWC Swim B H Melrose	11 Hcky B H Roseau Hcky G @ Chaska Wrestling H RL Inv.
12	13	14 BB B H DL BB G @ Crxton Hcky B @ Moorhd Hcky G H Roseau Swim B @ TRF	15 Student Early Release	16 Hcky B H EGF Wrestling @ Foss Tri	17 BB B H MTCA Inv	18 BB B H RL BB G H Dlth D Hcky B @ Herm Hcky G @ Brainrd Swim B H Sections Wrestling @ TRF
19	20 NO SCHOOL Martin Luther King Jr. Day	21 AIMSweb (K-7) Test Window Closes BB G H PL Hcky B @ SR-R Hcky G @ EGF Swim B @ DL	22	23 BB B @ GR BB G H Brainrd Hcky G @ Crxton	24 End of Second Term BB B H Cloquet Vocalmotive Dinner Show	25 BB G @ C-I Hcky B H Alex Hcky G H Alex Vocalmotive Dinner Show
26 Vocalmotive Dinner Show	27 School Board Mtng	28 BHS Registration Hcky G @ Moorhd Wrestling @ LF Tri	29	30 Hcky B @ Roseau Wrestling H Roseau & Brainrd	31 BB G H EGF Gym G H PRA Hcky G @ River Lks	

Behavior Expectations

Students are expected to behave in a manner that allows them to learn and teachers to teach. Behavior that distracts other students or teachers is inappropriate. Inappropriate behavior will be dealt with on an individual basis.

Discipline

Good classroom control is necessary for efficiency and is effective to group learning. Children who are well disciplined are better able to direct their interests, efforts, and abilities toward greater achievement. Those who are not capable of adequate self-direction waste opportunities and make learning difficult for classmates. Parents will be consulted when their child encounters problems of this nature. Their cooperation will be sought in determining a proper course of action.

Suspension

Occasionally it becomes necessary to suspend or expel a student from school. In this event all procedures will be governed by Minnesota Statutes 127.26-127.40 more commonly known as the Minnesota Pupil Fair Dismissal Act.

Under the provisions of this law students may be suspended or expelled from school for any of the following:

- A. Willful violation of any reasonable School Board Regulation;
- B. Willful conduct that significantly disrupts the rights of others to an education, or the ability of school personnel to perform their duties, or school sponsored extracurricular activities; or
- C. Willful conduct that endangers the pupil or other pupils, or surrounding persons, including school district employees, or property of the school.

Change of Address

Please notify the school of any change of address or telephone number. During summer call 333-3100, ext. 131. Make sure that the school is aware, at all times, of your correct phone number plus that of a neighbor, friend, or relative to contact in the event of an emergency. If you are planning to move either out of or within the district please notify the principal or the teacher. This will enable us to arrange for proper transfer of records and complete the withdrawal process.

School Times

<u>School</u>	<u>Start</u>	<u>End</u>
Central Elementary	8:05 a.m.	2:50 p.m.
J.W. Smith Elementary	8:05 a.m.	2:50 p.m.
Lincoln Elementary	8:05 a.m.	2:50 p.m.
Horace May Elementary	8:05 a.m.	2:50 p.m.
Northern Elementary	8:05 a.m.	2:50 p.m.
Paul Bunyan Center	8:05 a.m.	2:30 p.m.
Solway Elementary	8:05 a.m.	2:50 p.m.
Bemidji Middle School	8:35 a.m.	3:20 p.m.
Bemidji High School	8:20 a.m.	3:05 p.m.

Discrimination in Programs/Employment

It is the policy of Bemidji Area Schools not to discriminate on the basis of sex in its educational programs, activities, or employment as required by Title IX of the 1972 Education Amendments.

Dress Expectations

The home and school need to cooperate in the manner of dress. School is the child's workplace. Children perform better when dressed in a manner that does not interfere with learning. Inappropriate dress may interfere with learning. Short shorts, halter tops, short shirts (belly shirts), bandanas, and offensive pictures or wording on clothing are considered inappropriate. Outdoor clothing should be weather appropriate.

Emergency Evacuation

Parents are urged to listen to local radio stations for announcements regarding emergency situations.

Leaving School Before Dismissal Time

No elementary school child shall be permitted to leave school prior to dismissal time except at the request of a parent. The designated person must sign the child out at the school office. Parents are encouraged to schedule appointments for their child/children outside of the school day. School is your child's work. Make sure your child attends school every day except in case of illness.

Personal Belongings

The school can assume no responsibility for personal belongings brought by the children.

Reporting Pupil Progress

The schools report student progress to parents in three ways: 1) report cards, 2) parent-teacher conferences and 3) Parent Access portal updates online. Parents are encouraged to consult school personnel regarding their child's progress at any time.

School Visitation

Parents are most welcome and are urged to visit classes. If possible leave younger children at home when visiting a classroom. When you visit please stop by the Principal's office first.

Harassment/Violence Policy

Please refer to page 19.



Early Childhood Screening

Inviting All Children to Screening

In order for your child to start kindergarten in any Minnesota public school he/she must participate in early childhood screening which includes vision, hearing, height, weight, speech/language and developmental observations. These screenings simply record where the child is at in their development and is reported to the parent/guardian. We offer these screenings monthly at the Early Childhood Office in the Community Services Center, 616 America Avenue, Bemidji. Children are screened between the ages of 3 1/2 - 4 years of age, or earlier if parents have concerns about their child's development. There is no cost for the screening. Please call Sue at 333-8329 to schedule an appointment.

Screening dates are indicated on this calendar. Evening appointments are made from 3:00-6:00 and daytime appointments are from 8:30-2:30.

K1

K1 is a unique program to District 31 for children who will turn 5 in March through August. Children with late spring and summer birthdays can go to Kindergarten but may be small for their age and not ready for all day every day Kindergarten. K1 is less structured than Kindergarten and is a great introduction to the school setting. Children are introduced to letters of the alphabet and numbers up to 15; attend gym, music, art, technology, and library. Class size is limited to 20 children each day. Children in K1 go to school every other day and attend Kindergarten the following year. K1 is held at the Paul Bunyan Center with student busing available. Children with late spring and summer birthdays need to be screened in April for K1. This screening is in addition to preschool screening. If you would like more information about K1 or to sign up for screening please call the K1 teacher Lindsay Potter at 333-3119. You can also sign up for screening during Kindergarten registration.

Procedures for Emergency School Closing

Because of the climate in which we live, it is important for the home and the school to communicate safety issues to all students. Each day thousands of students are transported from an area of 833 square miles. The potential for problems is high. Therefore, great care must be taken so all students are given maximum protection. With respect to protection of students during emergency conditions the school district will take the following precautions:

- Parents/guardians have the responsibility to decide whether or not students will attend during emergency conditions. There will be days during the winter that some parents might feel it is too cold or too windy to have school. If school is held on any of these days, parents or guardians have the right to decide whether or not to send their students to school.
- If parents feel conditions exist during the school day that might impair the safety of their children they should feel free to pick them up at school. Sometimes it will be possible to use the telephone and other times parents will simply have to present themselves at the child's school and/or classroom.
- Students will be released to their parents or guardians only. By written approval they can be released to a friend or neighbor.
- If conditions exist at the end of the day that could impair the safety of students, they will not be allowed to leave the school.
- Bus drivers have been instructed to NOT allow students to get off the bus unless they have reasonable assurance they have somewhere to go.
- Parents are encouraged to LISTEN to the local radio stations for the most current weather information, and notice of school closings, late starts, and early releases. School closures are also listed on our website: www.bemidji.k12.mn.us Parents can also be notified through text messaging, voice-mail, or phone calls through the district's "Skylert" automated information system.
- Parents are encouraged to insist that students be dressed appropriately during the winter season.

- Critical to the safety of all students is that each family has a family strategy for emergency conditions: Basically, this includes a plan for anything that might happen if there is not a normal day of school. This would include communication with babysitters, day care providers, etc.

Parents' suggestions are welcome. The safety of your children is our number one priority. If you have ideas for improving safety during emergency conditions, please call your child's school.

Weapons

A Minnesota law makes it a felony to have a weapon or a look-alike weapon on school district properties. Please make sure you talk with your children about this law. Failure to do so could result in expulsion from school for the year and possible placement in a juvenile center. A weapon is defined as follows: "A dangerous weapon means any firearm, whether loaded or unloaded, or any device designed as a weapon and capable of producing death or great bodily harm, or any flammable liquid or other device or instrument that, in the manner it is used or intended to be used, is calculated or likely to produce death or great bodily harm."



Mission Statement

We recognize the uniqueness of middle level students, and are committed to:

- The development of academic and decision making skills
- Creating opportunities of exploration
- The cultivation of individual strengths and talents in a supportive environment
- Respecting individual and cultural differences

Middle Level Education in Bemidji

Bemidji Middle School is founded on middle level principles. The building was designed for grades 6, 7, and 8, following the school-within-a-school concept. This concept gives each student a home base with a team of teachers and core group of students.

In addition to core academic classes and STEM, students may elect band, chorus or orchestra. Teaching middle school students requires a tremendous amount of understanding and patience. Our teachers are committed to assisting students in reaching their highest potential.

BMS Website

Please visit our website at: <http://bms.bemidji.k12.mn.us/> to preview the following:

- Daily Bulletin
- BMS Activities
- Coaches' Page
- And much more!

Attendance

When your student is absent from school, we would appreciate a call to 333-3215, ext. 2004. You may also use this number for excusing your student in advance of the absence.

Student Council/PEER Leader

Two students are elected from each pod as their student council representatives. The Student Council plays an important role in student activities. The goal of the Peer Leader Program is to give students ownership in helping to create a safe and welcoming Middle School environment. Twelve students per grade level are selected and trained to serve as Peer Leaders.

Bemidji Middle School

Phone #333-3215

Directory

Ext.

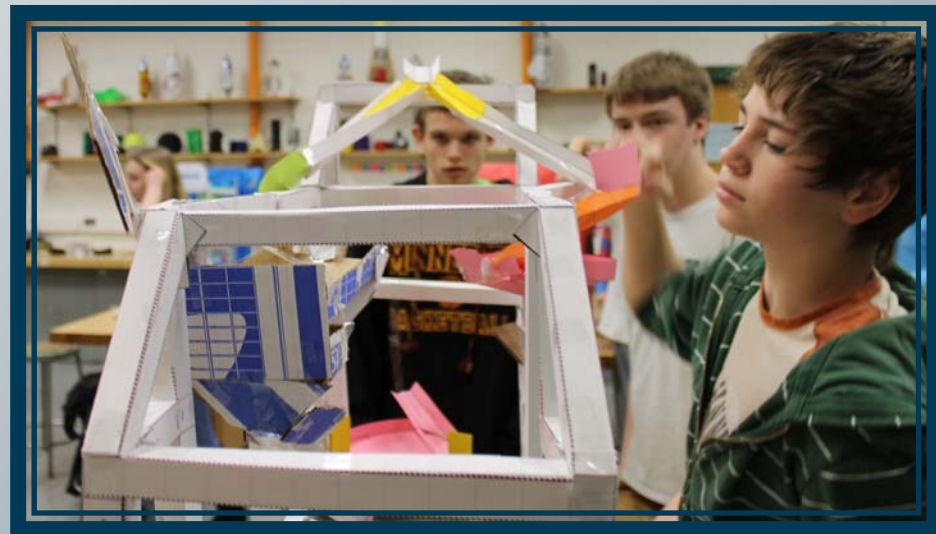
Mr. Hildenbrand, Principal	2041
Ms. Whiting, Principal's Secretary	2051
Mr. Parks, Assistant Principal	2031
Mr. Bjerkness, Dean of Students/Activities	
Director	2021
Attendance Office	2004
Ms. Elting, Registrar.....	8181
Ms. Stade, Counselor	8171
Mr. Zachman, Counselor	1961
Ms. Winge, Social Worker	8181
Ms. Hatfield, Health Assistant.....	1941
Mr. Hunt, Liaison Officer	1971

Middle School Co-Curricular Activities

We recognize the importance of co-curricular activities in the lives of our students. We encourage exploration and participation with our middle level students and provide a wide variety of opportunities for them to participate in both athletic and non-athletic programs. Interscholastic and intramural competitions are two major components of our co-curricular program. Interscholastic competition is limited because of the belief that exploration and experimentation fit more appropriately with middle level development. Intramural competition provides 6th grade students the opportunity to participate at a common level and experience.

Middle School Support Services

The purpose is to help each individual student achieve his/her highest potential growth mentally, emotionally and socially. In support of this mission, the following is a partial list of the services available: individual counseling, teacher consultation, achievement testing, small group work, tutoring, registration, orientation, parent assistance and consultation, information and referral (community resources and special education). For more information, contact Amanda Stade at 333-3215, ext. 8171; Travis Zachman at 333-3215, ext. 1961; or Pauline Winge at 333-3215, ext. 8181.



February 2014

Sun	Mon	Tue	Wed	Thu	Fri	Sat
						1 BB B <u>H</u> Moorhd Hcky B <u>H</u> River Lks Swim B @ Hibbing
2	3 ACCESS for ELLs Test Window Opens	4	5	6 BB B @ Dith E Hcky B <u>H</u> Warr Swim B <u>H</u> Dith E Wrestling <u>H</u> PR-B	7 Wrestling @ Moorhd	8 BB B <u>H</u> Alex BB G <u>H</u> Alex
9	10 BHS Band Concert	11 Curriculum Meeting BB G @ Moorhd Hcky B <u>H</u> Brainrd	12 Student Early Release District Staff Dev. Grants Due Early Child Screen	13 BB G <u>H</u> DL	14 BB B <u>H</u> SC T Hcky B <u>H</u> TRF	15 BB B @ SR-R Wrestling <u>H</u> 8AAA
16	17 NO SCHOOL Presidents' Day	18 BHS Snow Week BB G @ SC A	19	20 District Staff Dev. Grant Review BHS Conf. BB B <u>H</u> GR	21 BB G <u>H</u> Buffalo Swim B <u>H</u> 5A Ind	22 Swim B <u>H</u> 5A Ind
23	24 School Board Mtng	25 BB G @ GR	26	27	28 BB G @ Brainrd	



Bemidji High School, the Pride of the Northland and Home of the "Lumberjacks" serves approximately 1400 students from the Bemidji area in grades 9-12. High School students are encouraged to select a rigorous course of study providing skills for post-secondary education and employment. Bemidji High School offers one of the most comprehensive educational programs in the area.

Bemidji High School has a history of success in academics, athletics, music and fine arts. Each spring, scholarships totaling hundreds of thousands of dollars are awarded to deserving graduating seniors. These awards are evidence of the recognition of the importance of education as viewed by students, parents, educators, and the greater Bemidji area. About seventy percent of our students continue their education at a university or technical college. Student scores on the SAT and ACT are consistently above the state, national and regional averages and attest to our constant pursuit of academic excellence.

The Bemidji School District has a past record of excellence in its athletics and extracurricular activities. The State and nation-wide recognition of Bemidji's success in all of its extracurricular activities is verified through the awards and trophies earned throughout the years. Bemidji students are proud of the traditions established in these programs and work hard to continue them. **Go Jacks!**

Visit the BHS Activity website at:
<http://bhs.bemidji.k12.mn.us/>

Bemidji High School is named in the 2013 *U.S. News and World Report* as one of the Best High schools in the State of Minnesota, placing at number 30 out of 772 high schools. This report emphasizes our excellent AP scores, minority students taking the tests, and free/reduced price lunch statistics. The Lumberjacks were also recognized in a *Newsweek* report as one of the Best High Schools in the entire nation for College Readiness.

Activities and Athletics

Bemidji High School features a varied activities program within the following categories:

Category I Activities:

Fall

Cheerleader, Football
 Cross Country, Boys
 Cross Country, Girls
 Football
 Soccer, Boys
 Soccer, Girls
 Swimming, Girls
 Tennis, Girls
 Volleyball

Winter

Basketball, Boys
 Basketball, Girls
 Cheerleader: Basket-
 Ball; Hockey;
 and Wrestling
 Dance Team
 Gymnastics
 Hockey, Boys
 Hockey, Girls
 Nordic Ski, Boys
 Nordic Ski, Girls
 Swimming, Boys
 Wrestling

Spring

Baseball
 Golf, Boys
 Golf, Girls
 Softball

Category II Activities:

Tennis, Boys
 Track, Boys
 Track, Girls

Fine Arts and Academic Activities

Band
 Choir
 Marching Band
 Musical
 One Act Play
 Orchestra
 Speech

Category III Activities:

Dance Line
 Fall Musical
 Knowledge Bowl
 La Fiera Chamber
 Orchestra
 LaVoce Ballo Show Choir
 Math League Team
 Mock Trial
 National Honor Society
 Science Olympiad
 Stage Crew
 Student Council
 Vocalmotive Show Choir
 Yearbook

Bemidji Area Schools has established a participation fee to help defray the costs of our activity programs. Equipment, transportation and entry fees are just a few of the costs involved with our activities. Students in grades 9-12 are charged \$70.00 for the first sport and \$60.00 for each additional sport. Fine Arts, Academic Teams and Music Programs are charged a one time fee of \$70.00. Students in grades 6-8 are charged \$50.00 yearly for the first sport; \$35.00 for each additional sport; and a \$50.00 one-time fee for Fine Arts, Music and academic teams. There is a *Maximum Family Fee* of \$380.00 for students in grades 7-12.

The district has established standard admission prices for the athletic events as indicated below:

Event admission prices (at the door)

Adults.....	\$6.00
Students	\$3.00

(Prices apply only to regular season events)

For concerts the admission prices are:

Adults.....	\$2.00
Students	\$1.00

Season Tickets (available at the Athletic Office):

Adult Ten (10) Event ticket.....	\$40.00
Adult All Season ticket.....	\$70.00
Student Ten (10) Event ticket.....	\$20.00
Student All Season ticket	\$40.00
Employee Guest Pass.....	\$40.00

The season tickets are both non-refundable and non-replaceable. If your season ticket is lost or destroyed you will need to purchase a new one.

The other activities establish admission prices on an individual basis.



March 2014

Sun	Mon	Tue	Wed	Thu	Fri	Sat
						1
2	3 BHS Choir Concert	4 Early Child Screen	5 Early Child Screen	6 NO SCHOOL Conferences Early Child Screen	7 NO SCHOOL Conferences	8
9	10 MCA-III M/R Test Window Opens	11 Early Child Screen BHS Orch Concert	12 Student Early Release	13	14	15
16	17 School Board Mtng MCA-Mod, M/R; MTAS, M/R/S; MCA- III S Test Window Opens	18	19	20	21 ACCESS for ELLs Test Window Closes	22
23	24	25	26	27	28 End of Third Term	29
30	31					

Senior High Guidance Program

Counselors

Jenny Fraley (A-K)444-1600, ext. 3324
Kelley Hengel (L-Z)444-1600, ext. 3307

Registrar

Donna Rust444-1600, ext. 3326
Career Center, Barry Cervenka444-1600, ext. 3446
School-to-Work Coord., Lynn Falk444-1600, ext. 3357

Services Provided Include:

1. Assessing student needs – identifying and making appropriate referrals.
2. Individual counseling – crisis intervention.
3. Educational Counseling – orientation and registration for classes, credit reviews, transcript interpretation, college options counseling course information, 4-year Plan (for 9th grade students), Senior Review (detailed review of credits, discussion of further plans, testing and test interpretation, scholarship information, etc.).
4. Student Record Keeping – recording student transcripts, converting incoming credits, recording, computing and translating credits and GPA's, collecting data regarding report cards, progress reports, incompletes and grade changes. Recording statewide tests. Exporting transcripts, report cards, progress reports, college applications and scholarship applications.
5. Career Counseling – use of Career Resource Center.
6. Coordination of Programs – testing, career development, College and military visitations, assisting with special need programs.
7. Pre-college Counseling – school and instructional information, entrance requirements, costs, application deadlines, financial aid, scholarships, testing: Accuplacer; ASVAB; ACT; PLAN; PSAT; or SAT, recommendations, etc.
8. Adminstrating and interpreting Achievement Tests, Interest Surveys, and Aptitude Tests.
9. Financial Aid information – financial aid forms and information distributed to seniors.
10. Work with students, staff and parents on work experience including work release, job shadowing, internships and mentoring.

Bullying Prohibition Policy (summary)

A safe and civil environment is needed for students to learn and attain high academic standards and to promote healthy human relationships. Bullying, like other violent or disruptive behavior, is conduct that interferes with students' ability to learn and teachers' ability to educate students in a safe environment.

An act of bullying, by either an individual student or a group of students, is expressly prohibited on school district property or at school-related functions. This policy applies not only to students who directly engage in an act of bullying but also to students who, by their indirect behavior, condone or support another student's act of bullying. This policy also applies to any student whose conduct at any time or in any place constitutes bullying that interferes with or obstructs the mission or operations of the school district or the safety or welfare of the student, other students, or employees. The misuse of technology including, not limited to, teasing, intimidation, defaming, threatening, or terrorizing another student, teacher, administrator, volunteer, contractor, or other employee of the school district by sending or posting e-mail messages, instant messages, text messages, digital pictures or images, or Web site postings, including blogs, also may constitute an act of bullying regardless of whether such acts are committed on or off school district property and/or with or without the use of school district resources.

The school district will act to investigate all complaints of bullying and will discipline or take appropriate action against any student, teacher, administrator, volunteer, contractor, or other employee of the school district who is found to have violated this policy.

Any person who believes he or she has been the victim of bullying or any person with knowledge or belief of conduct that may constitute bullying shall report the alleged acts immediately to an appropriate school district official. A student may report bullying anonymously. However, the school district's ability to take action against an alleged perpetrator based solely on an anonymous report may be limited.

Upon receipt of a complaint or report of bullying, the school district shall undertake or authorize an investigation by school district officials or a third party designated by the school district.

Upon completion of the investigation, the school district will take appropriate action. Such action may include, but is not limited to, warning, suspension, exclusion, expulsion, transfer, remediation, termination, or discharge. Disciplinary consequences will be sufficiently severe to try to deter violations and to appropriately discipline prohibited behavior. School district action taken for violation of this policy will be consistent with the requirements of applicable collective bargaining agreements; applicable statutory authority, including the Minnesota Pupil Fair Dismissal Act; school district policies; and regulations.

A complete copy of this School Board Policy is available on the district's website or in any school office.

April 2014

Sun	Mon	Tue	Wed	Thu	Fri	Sat
		1	2	3	4	5
6	7	8	9	10 Early Child Screen	11	12 Early Child Screen
13	14	15 GRAD Writing Retest; MCA-III M/R Paper Test	16 MCA-III M (11)/R Paper Test	17	18 NO SCHOOL Good Friday	19
20	21 NO SCHOOL Easter Monday School Board Mtng	22 MCA-III M (3-8) Paper Test	23 MCA-III M (3-8) Paper Test	24	25	26
27	28	29	30 District Staff Dev. Grants Due			

Health Services

Bemidji Area Schools District Health Services recognizes the relationship between student health status and the ability to learn. Health Services consists of a District Licensed School Nurse with health paraprofessionals in the school health offices. The school health team works with families, students, and staff to promote a healthy and safe environment. Health office staff provide first aid and care of ill students, administer medication, and maintain school health records.

Health Screenings

Health screenings, including vision and hearing, will be done annually according to the State Department of Health guidelines in Kindergarten, first, third, and fifth grades, and for other grades as needed and requested. Height and weight checks, as well as scoliosis screenings, will be done as needed or requested. Head lice checks will be done on students as needed. Only two days are excused for treatment of head lice.

Immunizations

Minnesota immunization laws will be followed regarding the immunizations required for schools. Conscientious and medical exemptions for immunizations need to be notarized. Failure to comply with the Minnesota immunization requirements will result in your child being excluded from school. Learn more about immunization policy from this website:

www.health.state.mn.us/divs/idepc/immunize/arekid_seng.pdf

Medication Policy

Please refer to page 9.

Special Medical Needs

When a student has a special medical need/condition, parents are urged to call the District School Nurse at 333-3119. Health care plans and emergency response plans will be set up for individual students as needed.

For more on District Health Services please visit: www.bemidji.k12.mn.us/Support/health.html

For MN Health Care Programs applications, call: KIDS-NOW or Beltrami Co. at (218) 333-8300, or visit the Minnesota Department of Human Services website: <http://mn.gov/dhs/>

Harassment/Violence Policy

School Board Regulation 200-90-9: Harassment and Violence. It is the policy of Independent School District No. 31 to maintain a learning and working environment that is free from harassment and violence on the basis of race, color, creed, religion, national origin, sex, age, marital status, familial status, status with regard to public assistance, sexual orientation, or disability. The school district prohibits any form of harassment or violence on the basis of race, color, creed, religion, national origin, sex, age, marital status, familial status, status with regard to public assistance, sexual orientation, or disability.

Any student or employee of this district who harasses or commits violence toward another student or employee through conduct or communication of a sexual nature will be subject to the consequences described in the policy handbook.

All complaints, verbal or written, will be investigated and appropriate disciplinary action will be taken.

Individuals reporting a violation are encouraged to use the form available in the office. All verbal and written complaints should be submitted to the building principal or the Human Rights Officer, at (218) 333-3100, ext. 113.

Confidentiality of all persons involved will be respected to the fullest extent possible. This is a summary of the ISD #31 Harassment and Violence Policy. A complete copy is available in the Human Resources Office or on the website.

Standards of Behavior for Staff and Students

School Board Regulation 200-90-15, protects all students and staff from discrimination based on race, religion, disability or gender. Regardless of intent, this form of discriminating behavior has the capacity of substantially harming both the individuals to whom slurs are addressed as well as the community at large.

Students and staff who are subjected to this kind of behavior are encouraged to file a complaint with the site administrator and/or the Office of Human Rights at 333-3100, ext. 113.

This is a summary of the District #31 Standards of Behavior for Students and Staff–SBR 200-90-15. A complete policy is available in the Superintendent's office or on our website.



May 2014

Sun	Mon	Tue	Wed	Thu	Fri	Sat
				1 BHS Conf.	2	3 BHS Jr./Sr. Prom
4	5 BHS Hall of Fame Bnqt MAP R/M (2-10) Test Window Opens	6 BHS Band Concert	7	8 District Staff Dev. Grant Review	9 MCA-III M/R; MCA- Mod M/R; MTAS M/ R/S Test Window Closes	10
11	12 AIMSweb (K-7) Test Window Opens	13 Curriculum Meeting BHS Senior Awards Ceremony/National Honor Society Bnqt	14 Early Child Screen	15 BHS Indian Ed. Senior Bnqt BMS Band Concert	16 BHS Career Day MCA-III S Test Window Closes	17
18	19 School Board Mtng	20	21	22 BHS Orch Concert	23 AIMSweb (K-7) Test Window Closes	24 BHS Graduation
25	26 NO SCHOOL Memorial Day	27 BMS Orch Concert	28	29	30 MAP R/M (2-10) Test Window Closes	31

June/July 2014

Sun	Mon	Tue	Wed	Thu	Fri	Sat
1	2	3 Students' Last Day of School	4 Teachers Half-Day	5 Snow Day Make-Up/Clerical Day (if needed)	6 Snow Day Make-Up/Clerical Day (if needed) End of Fourth Term	7
8	9	10 Early Child Screen	11	12	13	14
15	16 School Board Mtng	17	18	19	20	21
22	23	24	25	26	27	28
29	30	1	2	3	4 Independence Day	5
6	7	8	9	10	11	12
13	14	15	16	17	18	19
20	21	22 GRAD Writing Retest	23	24	25	26
27	28	29	30	31		

Bemidji Area Schools 2013-2014 School Calendar

August							September							October						
S	M	T	W	T	F	S	S	M	T	W	T	F	S	S	M	T	W	T	F	S
				1	2	3	1	2	3	4	5	6	7	6	7	8	9	10	11	12
4	5	6	7	8	9	10	8	9	10	11	12	13	14	13	14	15	16	17	18	19
11	12	13	14	15	16	17	15	16	17	18	19	20	21	20	21	22	23	24	25	26
18	19	20	21	22	23	24	22	23	24	25	26	27	28	27	28	29	30	31		
25	26	27	28	29	30	31	29	30												

26 Teacher Day 27 Orientation 28 Teacher Day 29 Teacher Half Day 0 Student/3.5 Teachers	2 Labor Day 3 Students' First Day 30 Staff Development 19 Student/20 Teachers	17-18 Education Minnesota 21 Student/21 Teacher
---	--	--

November							December							January						
S	M	T	W	T	F	S	S	M	T	W	T	F	S	S	M	T	W	T	F	S
					1	2	1	2	3	4	5	6	7	1	2	3	4	5	6	7
3	4	5	6	7	8	9	8	9	10	11	12	13	14	8	9	10	11	12	13	14
10	11	12	13	14	15	16	15	16	17	18	19	20	21	12	13	14	15	16	17	18
17	18	19	20	21	22	23	22	23	24	25	26	27	28	19	20	21	22	23	24	25
24	25	26	27	28	29	30	29	30	31					26	27	28	29	30	31	

7-8 Conferences 13 Student Early Release 28-29 Thanksgiving 16.75 Student/19 Teachers	23-31 Winter Break 15 Student/15 Teachers	1 Winter Break 15 Student Early Release 20 Martin Luther King Jr Day 20.75 Student/31 Teachers
--	--	---

February							March							April						
S	M	T	W	T	F	S	S	M	T	W	T	F	S	S	M	T	W	T	F	S
						1						1								1
2	3	4	5	6	7	8	2	3	4	5	6	7	8	6	7	8	9	10	11	12
9	10	11	12	13	14	15	9	10	11	12	13	14	15	13	14	15	16	17	18	19
16	17	18	19	20	21	22	16	17	18	19	20	21	22	20	21	22	23	24	25	26
23	24	25	26	27	28		23	24	25	26	27	28	29	27	28	29	30			
							30	31												

17 Presidents' Day 12 Student Early Release 18.75 Student/19 Teachers	6-7 Conferences 12 Student Early Release 18.75 Student/21 Teachers	18 Good Friday 21 Easter Monday 20 Student/20 Teachers
---	--	--

May							June						
S	M	T	W	T	F	S	S	M	T	W	T	F	S
				1	2	3			1	2	3	4	5
4	5	6	7	8	9	10	8	9	10	11	12	13	14
11	12	13	14	15	16	17							15
18	19	20	21	22	23	24							
25	26	27	28	29	30	31							

26 Memorial Day 21 Student/21 Teacher	3 Students' Last Day 4 Teacher Half Day 5 Snow Day Make-Up/Clerical Day (if needed) 6 Snow Day Make-Up/Clerical Day (if needed)	2 Student/2.5 Teachers
--	--	------------------------

EARLY RELEASE DATES FOR STAFF DEVELOPMENT

November 13	January 15
February 12	March 12

End of 1 st Term	November 6
End of 2 nd Term	January 24
End of 3 rd Term	March 28
End of 4 th Term	June 6
BHS Graduation	May 24
173 Student Days/183 Teacher Days	



BEMIDJI
AREA SCHOOLS

<http://www.bemidji.k12.mn.us/>