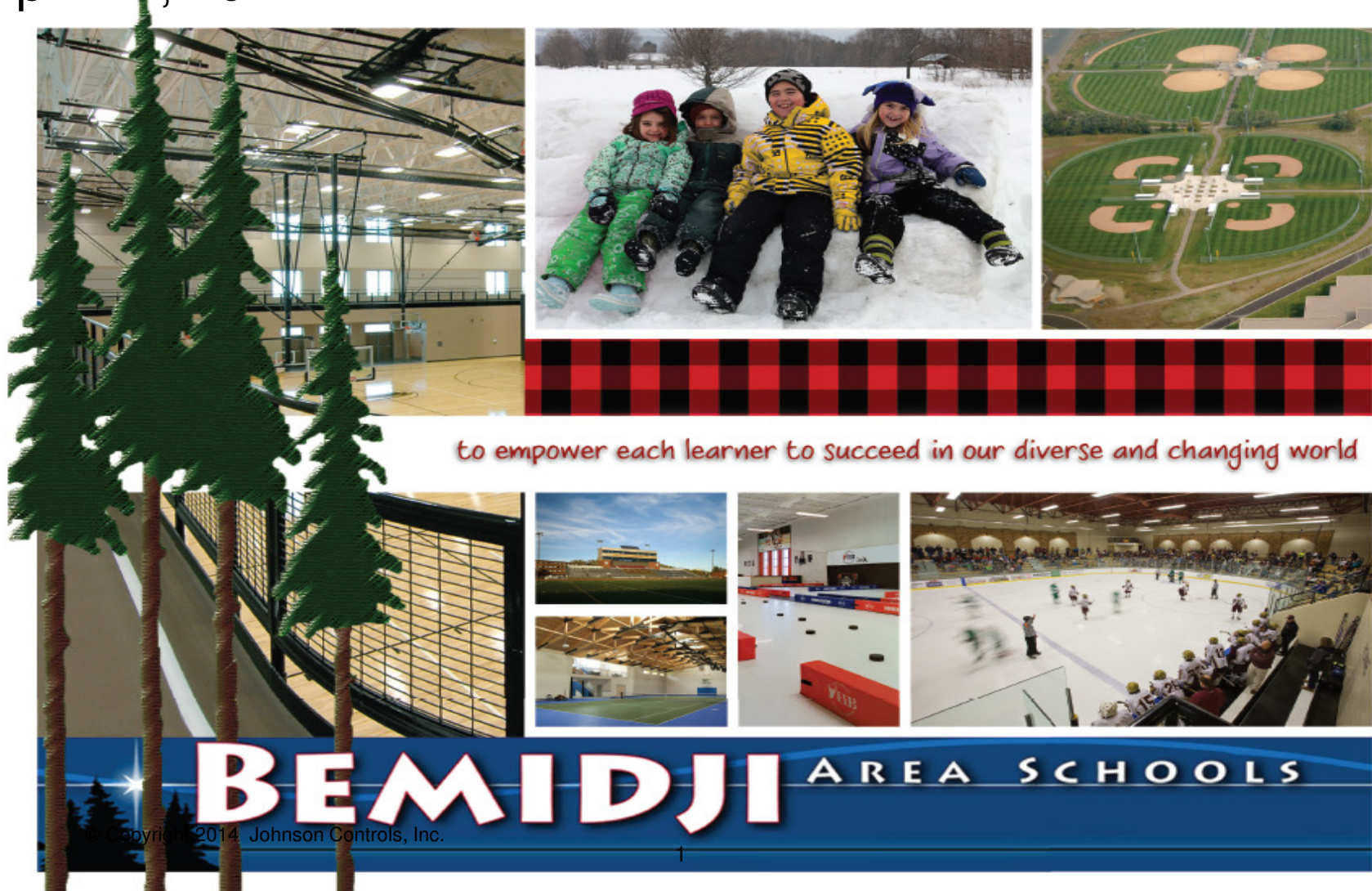


Bemidji Schools Overall IDEATION™ Session Results

April 21, 2014



Agenda

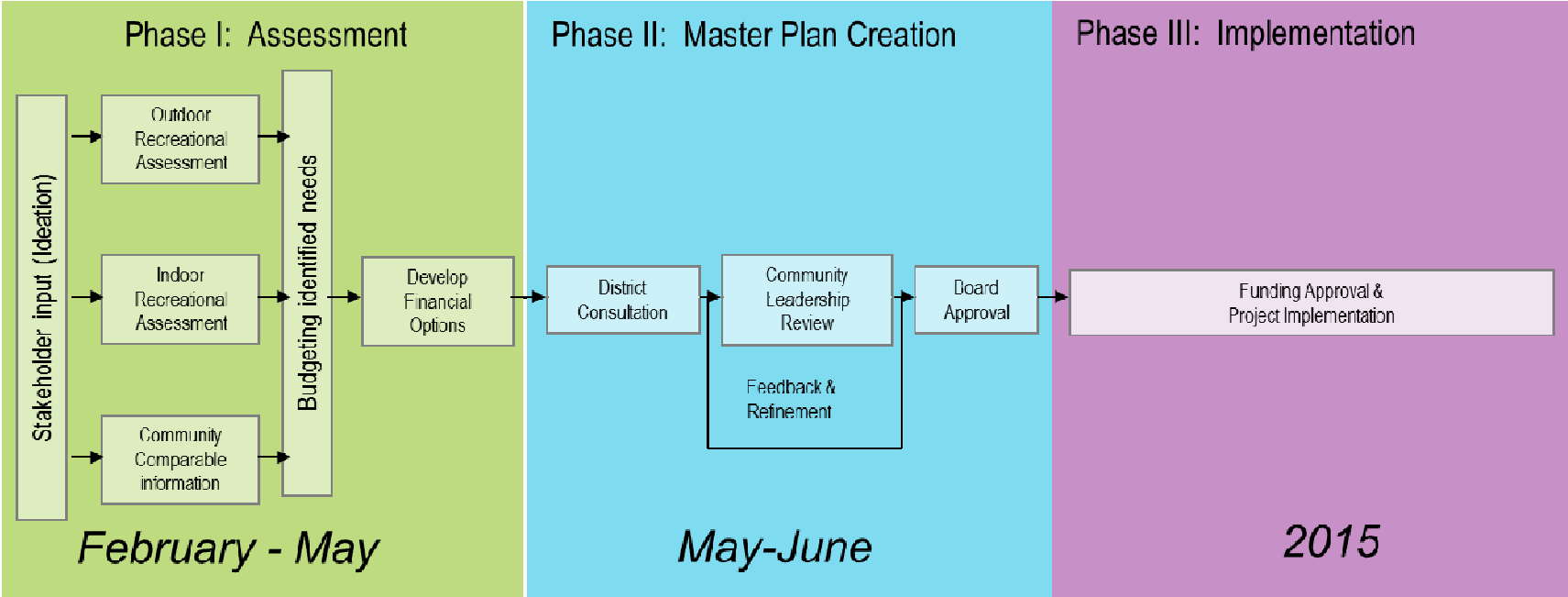
- Review process
- Open discussion
- Ideas on how other District's have used this information
- Lessons learned on community engagement for future use
- Review the Work Plan Timeline
- Questions and Answers



Northern Minnesota Solutions Team



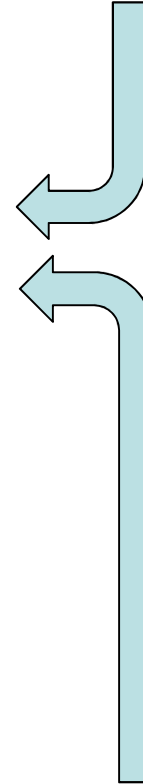
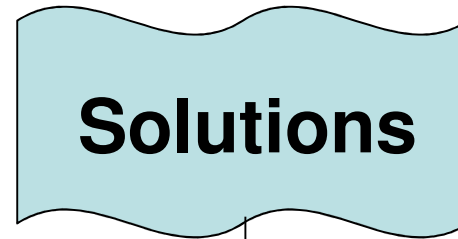
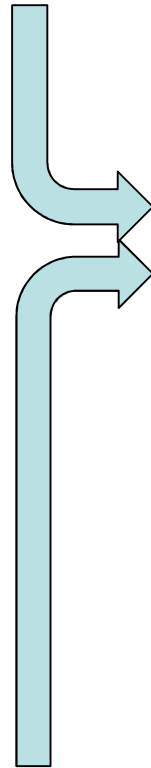
Overall Process and Timeline



OVERALL IDEATION AGENDA

Strengths and Opportunities

Changes and Challenges



Communication

Implementation

Values and Beliefs

Vision and Direction



Process

- Headlines
- Challenges
- Must do's
- Must not do's
- Strengths
- Needs
- Prioritization
- Last Words of Advice

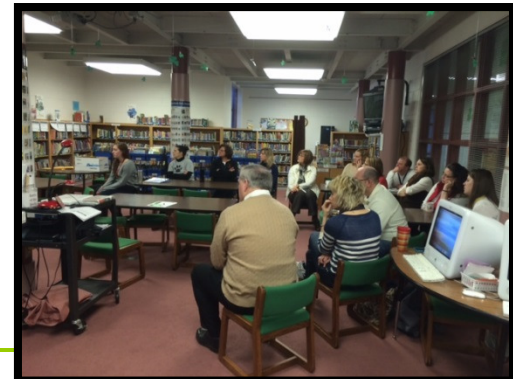
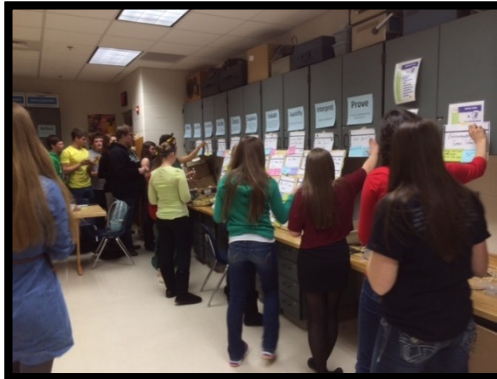
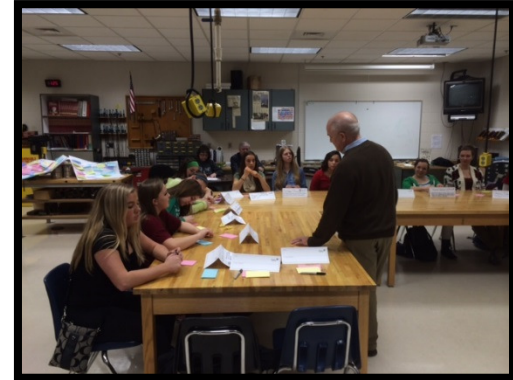


Ideation Sessions

- 20 different sessions included:
 - *District Administration Leadership Team*
 - *Youth Sports Groups*
 - *School Board*
 - *High School Students Group 1*
 - *High School Students Group 2*
 - *Community Leaders Group 1*
 - *Community Leaders Group 2*
 - *Middle School Staff*
 - *Middle School Students*
 - *Early Childhood Staff*
 - *District Coaches*
 - *District Maintenance/Warehouse Staff*
 - *Community Wide Group 3-4-14*
 - *Lincoln Staff/Parents*
 - *J.W. Smith Staff/Parents*
 - *Northern Staff/Parents*
 - *Solway & Alt Ed Staff/Parents*
 - *Central Staff/Parents*
 - *Horace May Staff/Parents*
 - *High School Staff*



Ideation - 20 sessions



Open Discussion

- Any feedback from the community or those that attended sessions?
- Did you have time to review the book?
- Thoughts?
- Any surprises?



Suggestions for Use of Data

- **Identify potential “hot button” issues:**
i.e.
 - Deer Lake School
 - Open Communication
 - Elementary Space



Suggestions for Use of Data

- **Identify Useful quotes and feedback for future Communications with Public: i.e.**
 - “Teachers care about you as an individual”
 - “Watching things is good but getting involved is what helps the community”

Review the Must do's, Must not do's and Last Words of Advice!



Vision

- High Achievement for all Students
- More year round recreational opportunities for the entire community
- Healthier Community through partnerships (YMCA, Rec. sports etc.)
- The earlier we can help kids the better for the community
- More time/space needed for early learners
- Desire for a Coordinating entity to maximize use of new and existing athletic/recreational spaces
- All students have the opportunity to participate in activities.



Strengths/Opportunities

- Regional Center
- Diversity
- High School Facility
- Bemidji State University
- Community interest in recreational space
- Unique Community Culture



Values

- Education
 - Community
 - Wellness
 - Natural Environment
 - Expectation of quality facilities/programs
 - Honest/open communication
 - Efficiency
 - Maximize use of resources
 - Take care of what we have
-



Challenges

- Growing Elementary Population/need to reduce class size
 - Poverty in the community
 - Access
 - Technology incorporation in the classroom
 - Transportation
 - Facilities
 - Being able to operate and maintain community capital investments
 - Deer Lake School
 - District storage needs
-



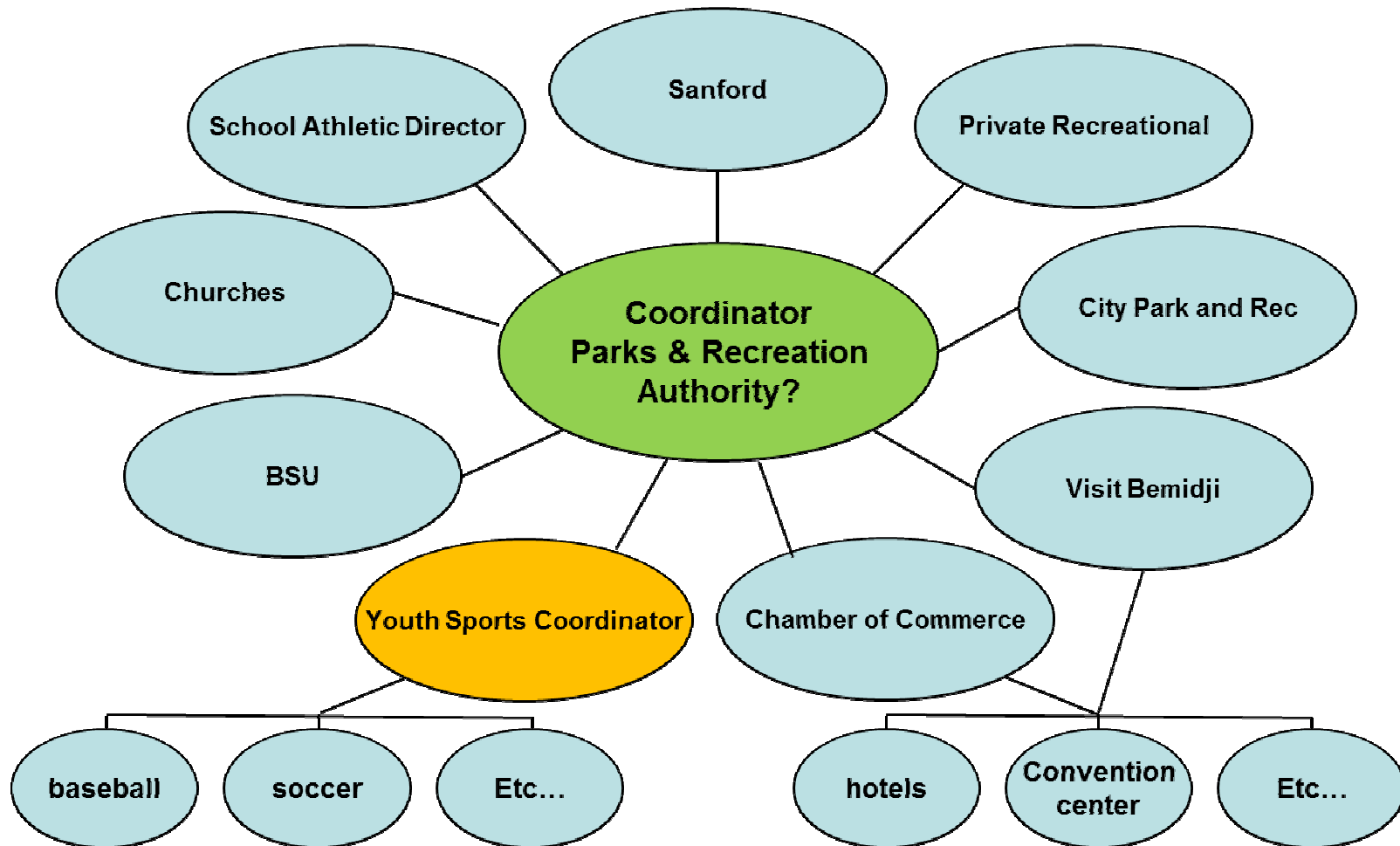
Why should we have fields on campus?

High School Students Group 2

- Have another athletic trainer – no running to and from other facilities (3)
- Freshmen and some Sophomores can't drive, difficult to participate (4)
- Practice where you play
- More practice time
- Everything in one place
- All activities in one area – no confusion for out-of-towners (2)
- We're BHS students, we should have home competitions at home (3)
- High School students shouldn't have to drive to practice. Would help with atmosphere.
- Can start right after school; everyone can be on time
- No constant driving. Ends up being safer and more efficient (2)
- More fans would be able to get to and they know where it is



Community Leaders #1 Coordinator Brainstorm



How to analyze information?

Looking for alignment...

Biggest Issues Facing District				
Administration	Board	Community	Community Leaders 1	Community Leaders 2
elementary space (growth issue)	Funding	Continuing assessments to as they progress K-12 catching kids falling through any gaps	More public use of existing facilities	YMCA facility - pool , community wellness center
closing the achievement gap	Closing the achievement gap	Better coordination between current facilities and organizations	Space organizer/scheduler marketer	Add elementary space for growing enrollment
addressing mental health and special education needs	Elementary growth	More opportunities, world/local language, cultural studies	Ability to operate and maintain all facilities	Indoor recreational facility (tennis, soccer, track, etc.)
dealing with education mandates	Graduation Rate	Close the achievement gap	Add elementary space for growing enrollment	Community recreational space organizer/scheduler/marketer
transportation funding	Parent student support	Better wi-fi/technoogy in middle school & high school	Indoor activity space	Address aging hockey rinks - new ice sheet
community poverty rate	Attendance	Year round food programs	Address aging hockey rinks - new ice sheet	Ability to operate and maintain all facilities
drop out rate	Low test scores	Early childhood center	Bus garage to reduce weather cancellations	More track and field facilities
high mobility rate	Meeting needs of students in Middle (not AP etc...)	Bus garage to reduce cold weather closings	YMCA Facility - community wellness center	Space availability for special populations
keeping quality employees	Special Ed funding	More programming for Early Childhood students	More track and field facilities	Bus garage to reduce weather cancellations
racism	Poverty	More public use of facilities		More gym space
adequate funding	Mandates	Traffic flow - middle School & high school		
inconsistent educational plan for students	Politics	Greater space for availability for special populations		
	Opportunities for adult education	Better community pre-school programming		
		Greater range of activities/choices		
		Consider on-going maintenance needs		
		More gym space		
		Quality materials/design vs low bid		
		Eliminate Nymore and add ice sheet at BCA		
		Doors and walls in middle school classrooms		
		Faster middle school lunch lines		
		More outdoor sports facilities throughout community		
		Deer Lake district storage needs		



Elementary Space Issue

Biggest Issues Facing District				
Administration	Board	Community	Community Leaders 1	Community Leaders 2
elementary space (growth issue)	Funding	Continuing assessments to as they progress K-12 catching kids falling through any gaps	More public use of existing facilities	YMCA facility - pool , community wellness center
closing the achievement gap	Closing the achievement gap	Better coordination between current facilities and organizations	Space organizer/scheduler marketer	Add elementary space for growing enrollment
addressing mental health and special education needs	Elementary growth	More opportunities, world/local language, cultural studies	Ability to operate and maintain all facilities	Indoor recreational facility (tennis, soccer, track, etc.)
dealing with education mandates	Graduation Rate	Close the achievement gap	Add elementary space for growing enrollment	Community recreational space organizer/scheduler/marketer
transportation funding	Parent student support	Better wi-fi/technology in middle school & high school	Indoor activity space	Address aging hockey rinks - new ice sheet
community poverty rate	Attendance	Year round food programs	Address aging hockey rinks - new ice sheet	Ability to operate and maintain all facilities
drop out rate	Low test scores	Early childhood center	Bus garage to reduce weather cancellations	More track and field facilities
high mobility rate	Meeting needs of students in Middle (not AP etc...)	Bus garage to reduce cold weather closings	YMCA Facility - community wellness center	Space availability for special populations
keeping quality employees	Special Ed funding	More programming for Early Childhood students	More track and field facilities	Bus garage to reduce weather cancellations
racism	Poverty	More public use of facilities		More gym space
adequate funding	Mandates	Traffic flow - middle School & high school		
inconsistent educational plan for students	Politics	Greater space for availability for special populations		
	Opportunities for adult education	Better community pre-school programming		
		Greater range of activities/choices		
		Consider on-going maintenance needs		
		More gym space		
		Quality materials/design vs low bid		
		Eliminate Nymore and add ice sheet at BCA		
		Doors and walls in middle school classrooms		
		Faster middle school lunch lines		
		More outdoor sports facilities throughout community		
		Deer Lake district storage needs		



Closing the Achievement Gap

Biggest Issues Facing District				
Administration	Board	Community	Community Leaders 1	Community Leaders 2
elementary space (growth issue)	Funding	Continuing assessments to as they progress K-12 catching kids falling through any gaps	More public use of existing facilities	YMCA facility - pool , community wellness center
closing the achievement gap	Closing the achievement gap	Better coordination between current facilities and organizations	Space organizer/scheduler marketer	Add elementary space for growing enrollment
addressing mental health and special education needs	Elementary growth	More opportunities, world/local language, cultural studies	Ability to operate and maintain all facilities	Indoor recreational facility (tennis, soccer, track, etc.)
dealing with education mandates	Graduation Rate	Close the achievement gap	Add elementary space for growing enrollment	Community recreational space organizer/scheduler/marketer
transportation funding	Parent student support	Better wi-fi/technoogy in middle school & high school	Indoor activity space	Address aging hockey rinks - new ice sheet
community poverty rate	Attendance	Year round food programs	Address aging hockey rinks - new ice sheet	Ability to operate and maintain all facilities
drop out rate	Low test scores	Early childhood center	Bus garage to reduce weather cancellations	More track and field facilities
high mobility rate	Meeting needs of students in Middle (not AP etc...)	Bus garage to reduce cold weather closings	YMCA Facility - community wellness center	Space availability for special populations
keeping quality employees	Special Ed funding	More programming for Early Childhood students	More track and field facilities	Bus garage to reduce weather cancellations
racism	Poverty	More public use of facilities		More gym space
adequate funding	Mandates	Traffic flow - middle School & high school		
inconsistent educational plan for students	Politics	Greater space for availability for special populations		
	Opportunities for adult education	Better community pre-school programming		
		Greater range of activities/choices		
		Consider on-going maintenance needs		
		More gym space		
		Quality materials/design vs low bid		
		Eliminate Nymore and add ice sheet at BCA		
		Doors and walls in middle school classrooms		
		Faster middle school lunch lines		
		More outdoor sports facilities throughout community		
		Deer Lake district storage needs		



Community Poverty

Biggest Issues Facing District

Administration

Board

elementary space (growth issue)	Funding
closing the achievement gap	Closing the achievement gap
addressing mental health and special education needs	Elementary growth
dealing with education mandates	Graduation Rate
transportation funding	Parent student support
community poverty rate	Attendance
drop out rate	Low test scores
high mobility rate	Meeting needs of students in Middle (not AP etc...)
keeping quality employees	Special Ed funding
racism	Poverty
adequate funding	Mandates
inconsistent educational plan for students	Politics
	Opportunities for adult education



Adequate Funding

Biggest Issues Facing District

Administration

Board

elementary space (growth issue)	Funding
closing the achievement gap	Closing the achievement gap
addressing mental health and special education needs	Elementary growth
dealing with education mandates	Graduation Rate
transportation funding	Parent student support
community poverty rate	Attendance
drop out rate	Low test scores
high mobility rate	Meeting needs of students in Middle (not AP etc...)
keeping quality employees	Special Ed funding
racism	Poverty
adequate funding	Mandates
inconsistent educational plan for students	Politics
	Opportunities for adult education



Education Mandates

Biggest Issues Facing District

Administration

Board

elementary space (growth issue)	Funding
closing the achievement gap	Closing the achievement gap
addressing mental health and special education needs	Elementary growth
dealing with education mandates	Graduation Rate
transportation funding	Parent student support
community poverty rate	Attendance
drop out rate	Low test scores
high mobility rate	Meeting needs of students in Middle (not AP etc...)
keeping quality employees	Special Ed funding
racism	Poverty
adequate funding	Mandates
inconsistent educational plan for students	Politics
	Opportunities for adult education



Dropout Rates

Biggest Issues Facing District

Administration

Board

elementary space (growth issue)	Funding
closing the achievement gap	Closing the achievement gap
addressing mental health and special education needs	Elementary growth
dealing with education mandates	Graduation Rate
transportation funding	Parent student support
community poverty rate	Attendance
drop out rate	Low test scores
high mobility rate	Meeting needs of students in Middle (not AP etc...)
keeping quality employees	Special Ed funding
racism	Poverty
adequate funding	Mandates
inconsistent educational plan for students	Politics
	Opportunities for adult education



Others...

Biggest Issues Facing District

Administration

Board

elementary space (growth issue)	Funding
closing the achievement gap	Closing the achievement gap
addressing mental health and special education needs	Elementary growth
dealing with education mandates	Graduation Rate
transportation funding	Parent student support
community poverty rate	Attendance
drop out rate	Low test scores
high mobility rate	Meeting needs of students in Middle (not AP etc...)
keeping quality employees	Special Ed funding
racism	Poverty
adequate funding	Mandates
inconsistent educational plan for students	Politics
	Opportunities for adult education



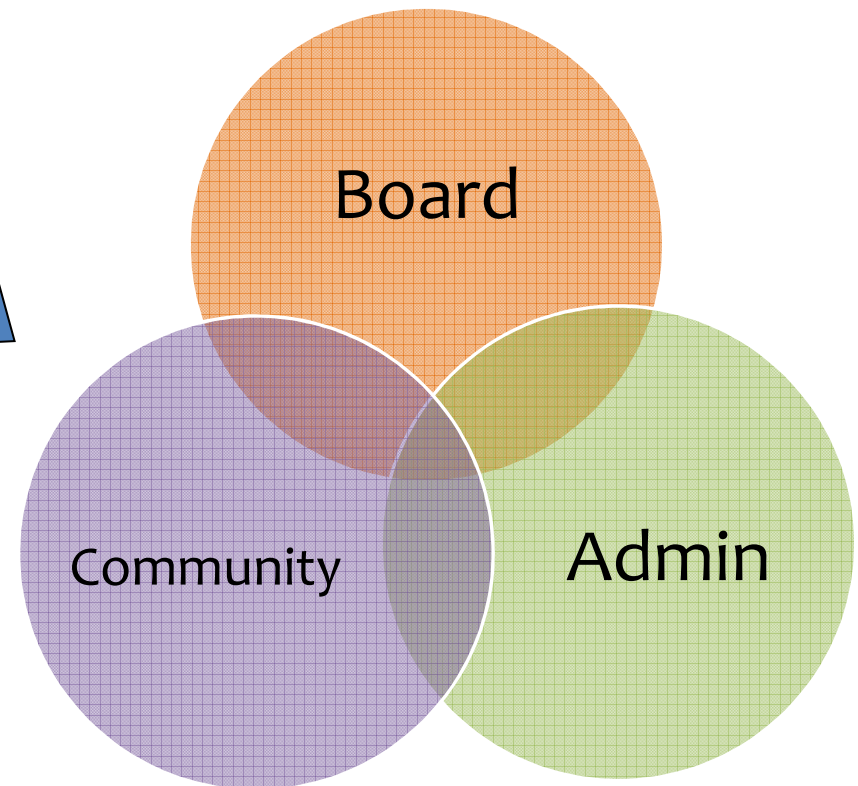
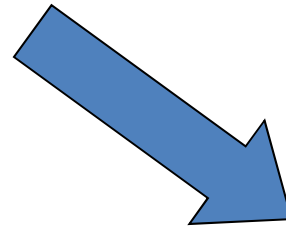
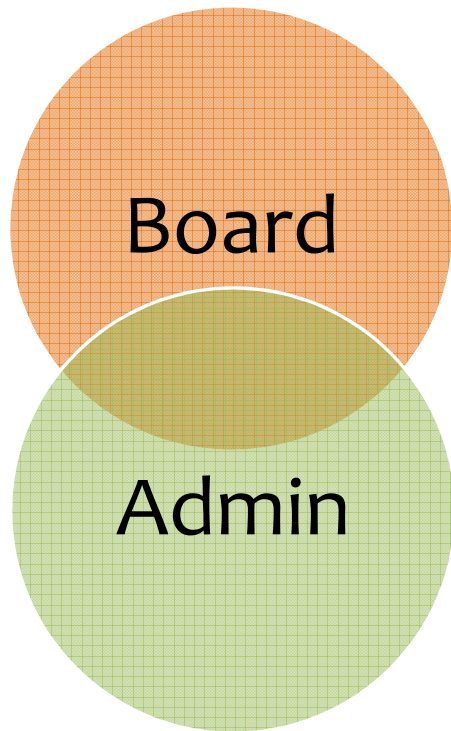


Lessons Learned on Community Engagement for future use:

We have worked with school districts across northern Minnesota.

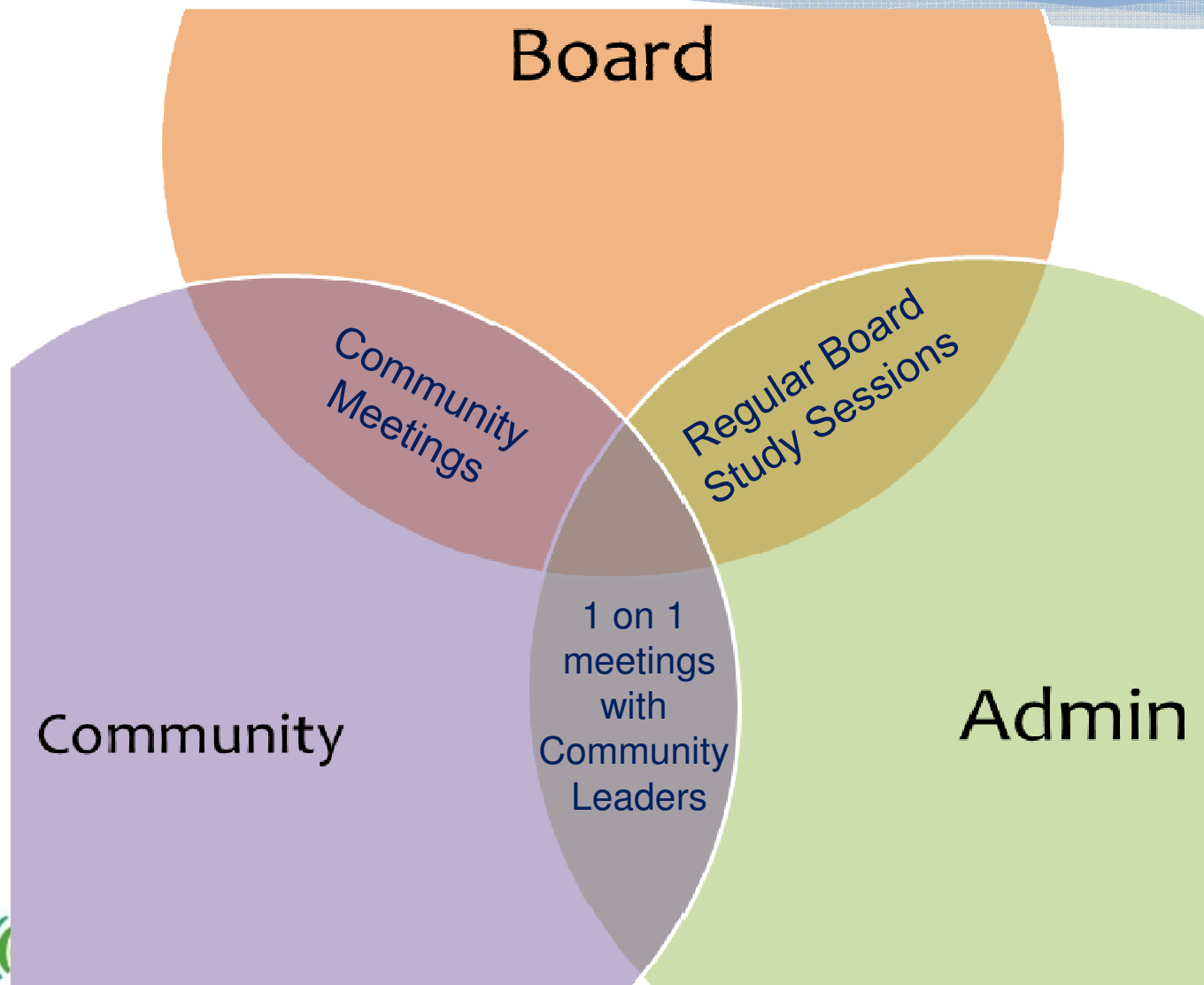
- * We are Leaders in Education and focus on the challenges schools face**
- * We Work with Public Schools to address public concerns**
- * We are advocate for the owner**
- * We are responsive to the community**

Need to Engage the Community in Healthy Discussion



You can't build community support by telling them about the plan – engage community into helping to solve challenges

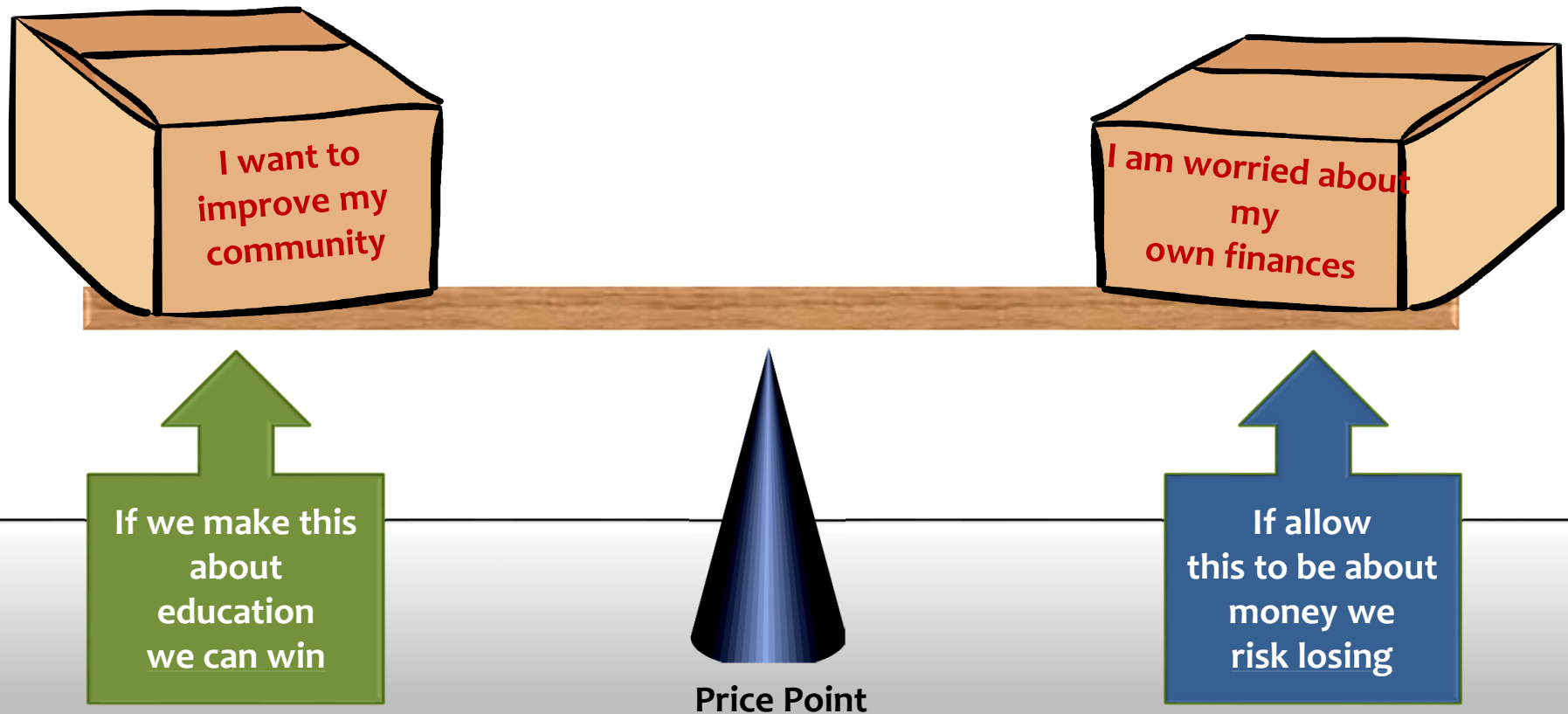
Need to Engage the Community in Healthy Discussion



What are the Key Factors That Separate Successful from Unsuccessful Referenda?

1. High satisfaction with local schools
2. Trusted administration and board
3. People know the plan
4. Two-way dialogue
5. Debate is about education, not taxes
6. Fair price point is established

Fundamental Public Decision



Evolution of Opposition Messaging



Anti-Tax + Government Distrust + Hope for Better Plan > 50% ?

Specific Improvements Can Impact the Overall Support for a Bond Referendum

General Positive Impact

- Science and Language Labs
- Multipurpose Classrooms
- Libraries or Media Centers
- Safety Features
- Indoor Air Quality Improvements
- Technology

General Negative Impact

- Hockey Arenas
- Fieldhouses
- Auditoriums
- Artificial Turf
- Bus Garages
- Community Centers ??

Work Plan Review - Ideation

Month of April	Present Ideation Report to the School Board and District Leadership	JCI/Staff
	Update district web site with planning information	Jim Hess and Staff
Month of April	District Leadership to share Ideation results with Stakeholder Groups and get feedback	Jim Hess and Staff



Work Plan Review - Assessment

When	What	Who
Month of April	Consulting team performs indoor and outdoor assessments	JCI/KA/Larson
May	<p>Consulting team to present Assessment results to Board and Administration. (Mid-May)</p> <p>District Presents Assessment results to key stakeholder groups to draft Master Plan:</p> <ul style="list-style-type: none"> - Community Leaders - Youth Sports Organizations - District Athletic Coaches - Discussion of options <p>District to update website and mail out community publication summarizing ideation and assessment information.</p> <p>District Leadership to continue to share Ideation and assessment results with Stakeholder Groups</p>	<p>JCI/KA/Larson</p> <p>Jim, Board, and JCI facilitators</p> <p>District Staff</p> <p>Jim, School Board and Staff</p>



Work Plan Review – Master Plan

When	What	Who
Early June	Final public meeting at High School: - Open house and tour Opportunity for individuals or groups to present their own plans for Board review	Jim, School Board, and JCI facilitators
Late June	Finalize plan Approval of Review and Comment – start 60-day review clock Post final plan, Review and Comment on web site Continue to share plan with the community and stakeholders throughout summer	Board Board Jim/Staff Jim and Board



Questions?

Thank you for your
Time and Participation!!

