

ENROLLMENT GRAPHS & TABLES

9/18/2018

BEMIDJI

31

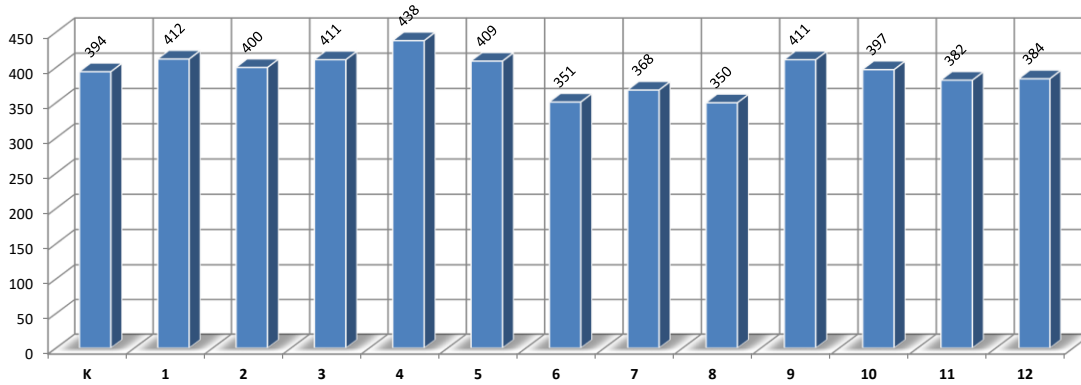
Method

The selected History for Tables & Graphs was: **FALL ENROLLMENT DATA** with **Ratio 5th Yr**

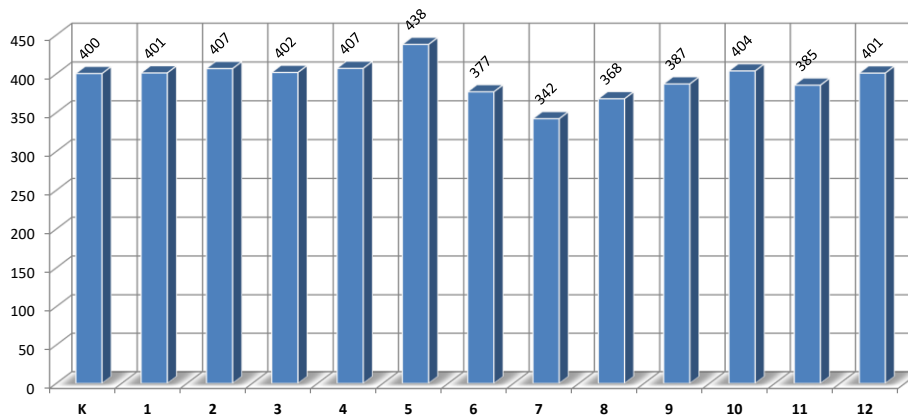
(12)

| | Enrollment History - FALL ENROLLMENT DATA | | | | | | | Enrollment Projections - FALL ENROLLMENT DATA | | | | |
|---------------|---|---------|---------|---------|---------|---------|---------|---|---------|---------|---------|---------|
| | 2011-12 | 2012-13 | 2013-14 | 2014-15 | 2015-16 | 2016-17 | 2017-18 | 2018-19 | 2019-20 | 2020-21 | 2021-22 | 2022-23 |
| EC | 130.0 | 139.0 | 141.0 | 147.0 | 145.0 | 121.0 | 121.0 | 123.0 | 122.2 | 121.5 | 120.7 | 120.0 |
| K | 392.0 | 420.0 | 465.0 | 384.0 | 401.0 | 415.0 | 394.0 | 400.4 | 398.0 | 395.6 | 393.1 | 390.7 |
| 1 | 403.0 | 364.0 | 433.0 | 454.0 | 403.0 | 418.0 | 412.0 | 401.2 | 407.8 | 405.3 | 402.8 | 400.4 |
| 2 | 386.0 | 404.0 | 371.0 | 418.0 | 443.0 | 411.0 | 400.0 | 406.8 | 396.2 | 402.7 | 400.2 | 397.8 |
| 3 | 396.0 | 381.0 | 409.0 | 381.0 | 412.0 | 442.0 | 411.0 | 401.8 | 408.7 | 398.0 | 404.5 | 402.0 |
| 4 | 384.0 | 396.0 | 374.0 | 397.0 | 391.0 | 405.0 | 438.0 | 407.1 | 398.0 | 404.8 | 394.2 | 400.7 |
| 5 | 371.0 | 399.0 | 399.0 | 367.0 | 392.0 | 396.0 | 409.0 | 437.9 | 407.0 | 397.9 | 404.7 | 394.1 |
| 6 | 369.0 | 387.0 | 375.0 | 383.0 | 338.0 | 353.0 | 351.0 | 376.9 | 403.5 | 375.1 | 366.7 | 372.9 |
| 7 | 371.0 | 386.0 | 354.0 | 354.0 | 374.0 | 337.0 | 368.0 | 342.2 | 367.5 | 393.4 | 365.7 | 357.5 |
| 8 | 348.0 | 368.0 | 371.0 | 350.0 | 354.0 | 378.0 | 350.0 | 367.9 | 342.1 | 367.4 | 393.4 | 365.6 |
| 9 | 402.0 | 385.0 | 394.0 | 399.0 | 404.0 | 404.0 | 411.0 | 387.0 | 406.9 | 378.3 | 406.3 | 435.0 |
| 10 | 377.0 | 390.0 | 383.0 | 385.0 | 393.0 | 393.0 | 397.0 | 403.8 | 380.2 | 399.7 | 371.7 | 399.1 |
| 11 | 401.0 | 366.0 | 364.0 | 381.0 | 378.0 | 382.0 | 382.0 | 385.4 | 392.0 | 369.1 | 388.1 | 360.9 |
| 12 | 392.0 | 411.0 | 375.0 | 394.0 | 407.0 | 404.0 | 384.0 | 401.0 | 404.6 | 411.5 | 387.5 | 407.4 |
| K-12 | 4992.0 | 5057.0 | 5067.0 | 5047.0 | 5090.0 | 5138.0 | 5107.0 | 5119.6 | 5112.5 | 5098.9 | 5078.9 | 5084.1 |
| Pre K-12 | 5122.0 | 5196.0 | 5208.0 | 5194.0 | 5235.0 | 5259.0 | 5228.0 | 5242.6 | 5234.8 | 5220.4 | 5199.7 | 5204.1 |
| % Change K-12 | | 1.30% | 0.20% | -0.39% | 0.85% | 0.94% | -0.60% | 0.25% | -0.14% | -0.27% | -0.39% | 0.10% |

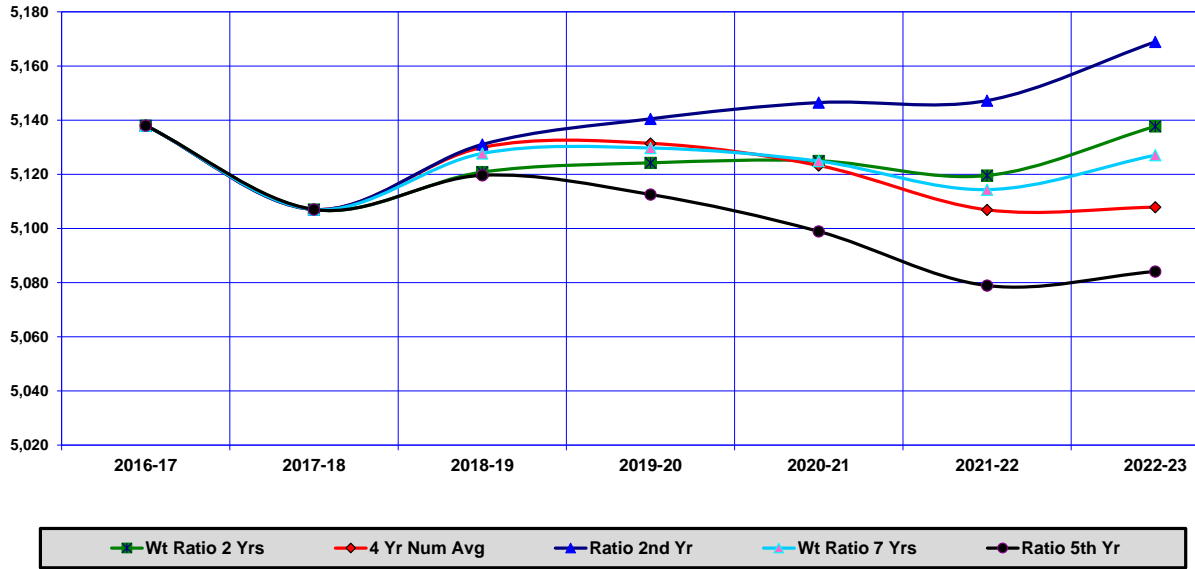
Enrollment by Grade for Current Year 2017-18



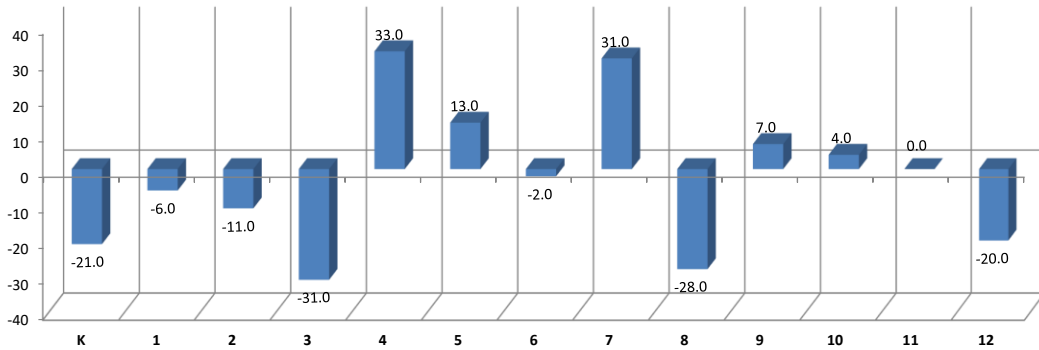
Enrollment by Grade for 1st Projection Year 2018-19



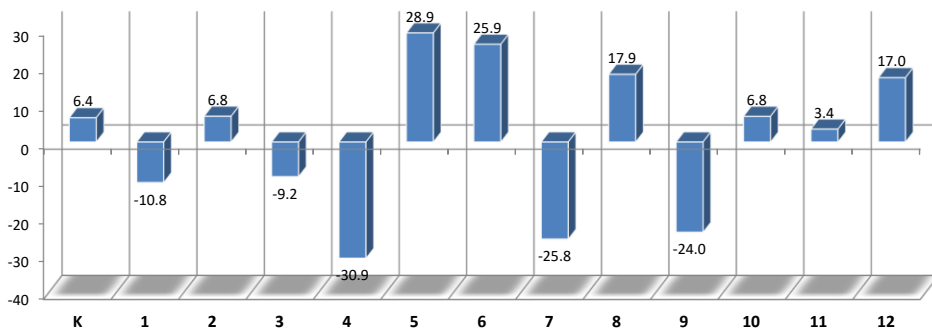
Enrollment Graph of Projections Selected on the DATA Worksheet.



Enrollment Change by Grade for the Current Year 2017-18



Enrollment Change by Grade for the 1st Projection Year 2018-19



ENPRO is the Enrollment Projection System of SchoolFinances.Com

Projecting Enrollment from Prior Enrollments is a Computational Process

To understand the components programmed into this system the user must understand Cohort Survival, Weighted Cohort Survival, and the Numerical Survival or Change Methodology

The Projection used in this result is for BEMIDJI 31
 The methodology used for this report is **Ratio 5th Yr**

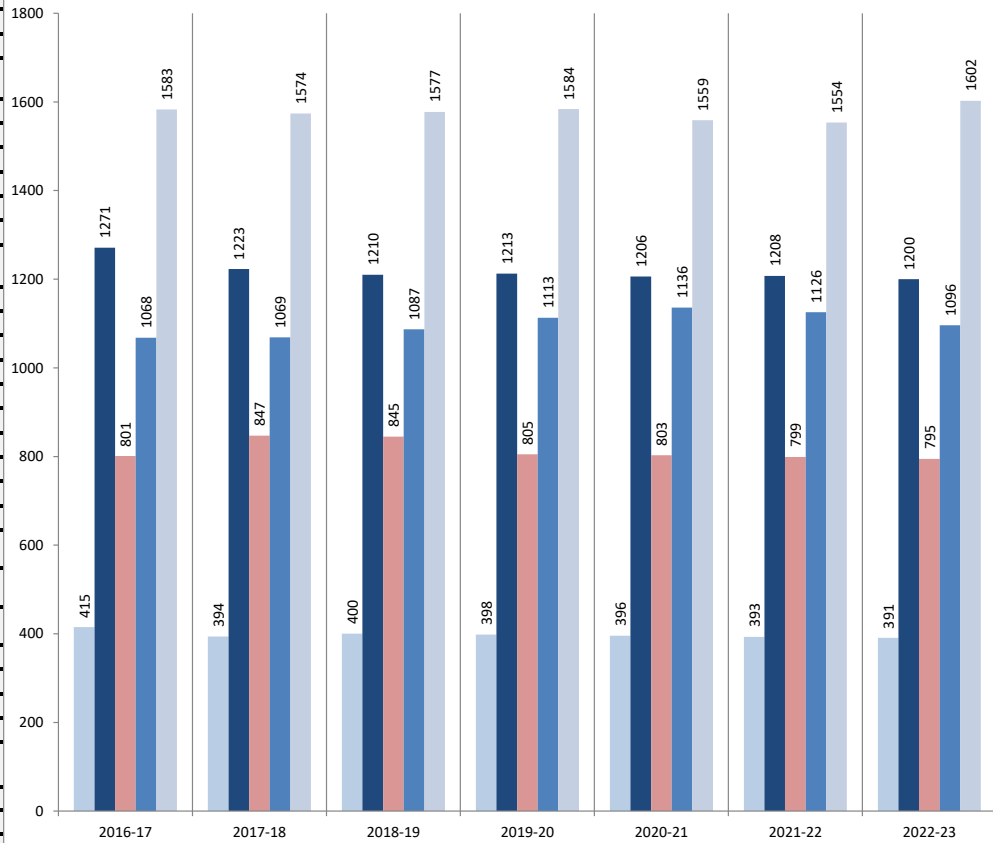
The projection for K-12 anticipates an enrollment change of **12.6** From 2017-18 to 2018-19 (1) yr.
 The projection for K-12 anticipates an enrollment change of **-22.9** From 2017-18 to 2022-23 (5) yrs.

Enrollment Projections by District Grade Groupings present these changes by grouping.

Grade Groupings

- 1 Kindergarten
- Grades K-1
- Grades K-2
- Grades K-3
- Grades 1-2
- 2 Grades 1-3
- Grades 1-4
- Grades 1-5
- Grades 1-6
- Grades 1-7
- Grades 1-8
- Grades 2-3
- Grades 2-4
- Grades 2-5
- Grades 2-6
- Grades 3-4
- Grades 1-3
- Grades 3-6
- Grades 3-7
- 3 Grades 4-5
- Grades 4-6
- Grades 4-7
- Grades 4-8
- Grades 5-6
- Grades 5-7
- Grades 5-8
- Grades 6-7
- 4 Grades 6-8
- Grades 6-9
- Grades 7-8
- Grades 7-9
- Grades 7-12
- Grades 8-9
- Grades 8-10
- Grades 8-12
- Grades 9-10
- 5 Grades 9-12
- Grades 10-12
- Grades 11-12
- Grade 12

Current and Projected Enrollment by Grade Groupings



Legend: Kindergarten (light blue), Grades 1-3 (dark blue), Grades 4-5 (red), Grades 6-8 (medium blue), Grades 9-12 (light grey)

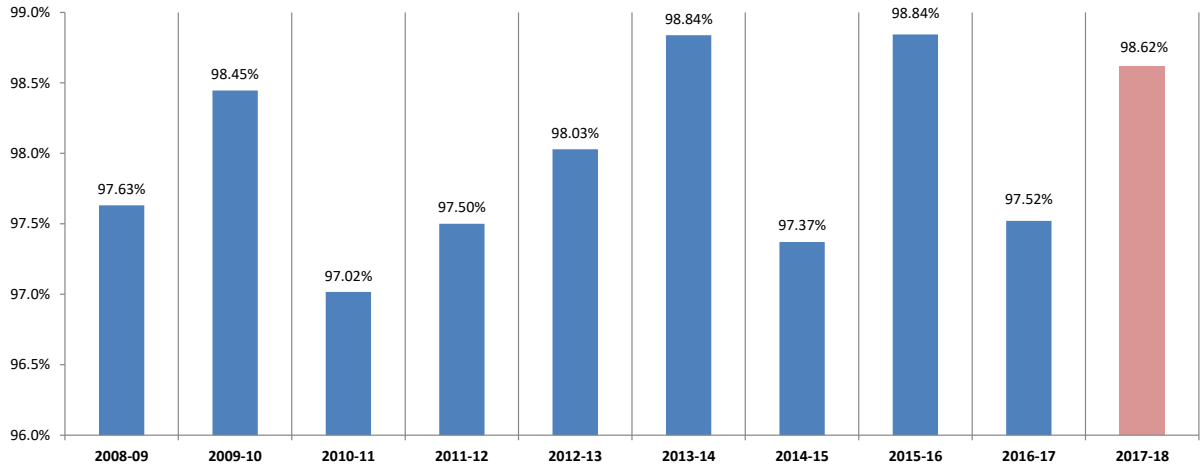
| Grade Group | Grade Group | Prior Yr. | Current Yr. | Projection Years | | | | |
|-------------|-------------------|----------------|----------------|------------------|----------------|----------------|----------------|----------------|
| | | 2016-17 | 2017-18 | 2018-19 | 2019-20 | 2020-21 | 2021-22 | 2022-23 |
| 1 | Kindergarten | 415.0 | 394.0 | 400.4 | 398.0 | 395.6 | 393.1 | 390.7 |
| 2 | Grades 1-3 | 1,271.0 | 1,223.0 | 1,209.9 | 1,212.7 | 1,206.0 | 1,207.6 | 1,200.2 |
| 3 | Grades 4-5 | 801.0 | 847.0 | 845.0 | 805.0 | 802.7 | 798.9 | 794.8 |
| 4 | Grades 6-8 | 1,068.0 | 1,069.0 | 1,087.0 | 1,113.1 | 1,135.9 | 1,125.7 | 1,096.0 |
| 5 | Grades 9-12 | 1,583.0 | 1,574.0 | 1,577.3 | 1,583.7 | 1,558.8 | 1,553.6 | 1,602.4 |
| | Total K-12 | 5,138.0 | 5,107.0 | 5,119.6 | 5,112.5 | 5,098.9 | 5,078.9 | 5,084.1 |

Data is taken from ENHIST DATA to Compute Change in Enrollment During the Year and Percent

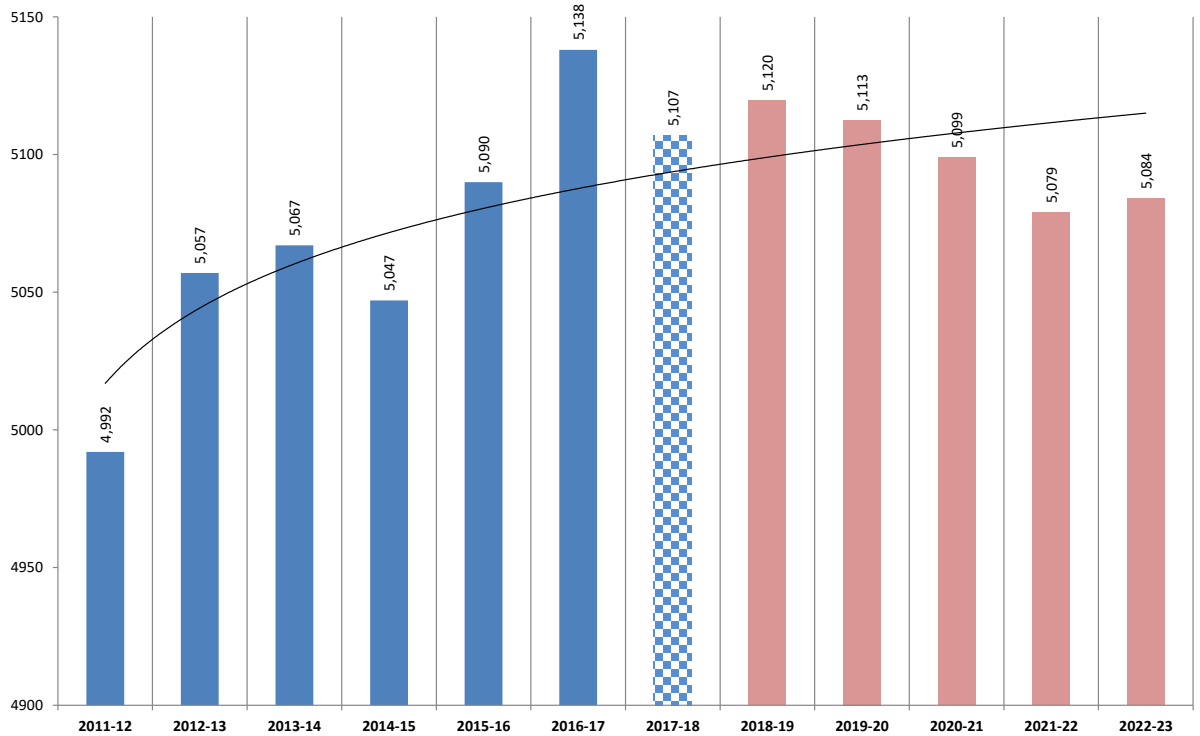
This percentage may be used in the FPM for estimating Change if Fall Enrollment is used for Projections

| | 2008-09 | 2009-10 | 2010-11 | 2011-12 | 2012-13 | 2013-14 | 2014-15 | 2015-16 | 2016-17 | 2017-18 |
|---------------------|----------|----------|----------|----------|----------|----------|----------|----------|----------|----------|
| Fall Data K-12 | 4,699 | 4,824 | 4,980 | 4,992 | 5,057 | 5,067 | 5,047 | 5,090 | 5,138 | 5,107 |
| EOY ADM K-12 | 4,587.71 | 4,749.01 | 4,831.40 | 4,867.23 | 4,957.32 | 5,008.12 | 4,914.33 | 5,031.16 | 5,010.64 | 5,036.31 |
| % Fall to End-of-Yr | 97.63% | 98.45% | 97.02% | 97.50% | 98.03% | 98.84% | 97.37% | 98.84% | 97.52% | 98.62% |

Percent of End-of-Year Adjusted ADM to Fall Enrollment



K-12 ENROLLMENT HISTORY & PROJECTED TOTAL ENROLLMENT



Enrollment History Graphs

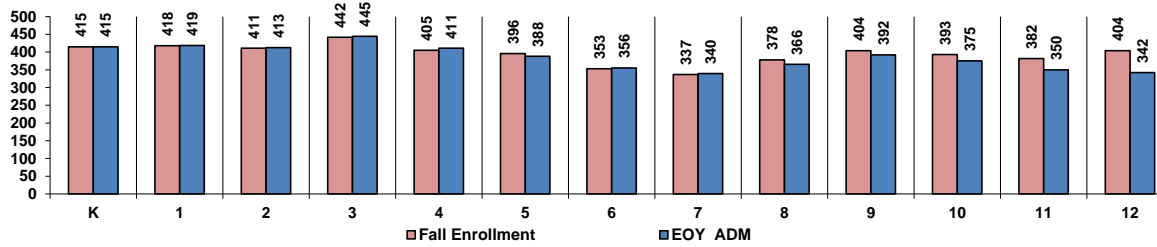
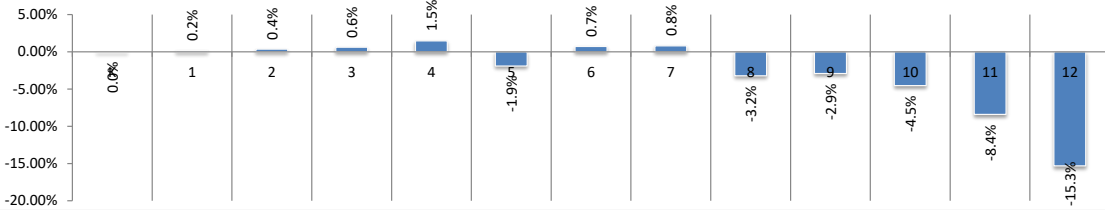
These graphs are drawn from ENHIST and would not include Enrollment Adjustments

BEMIDJI

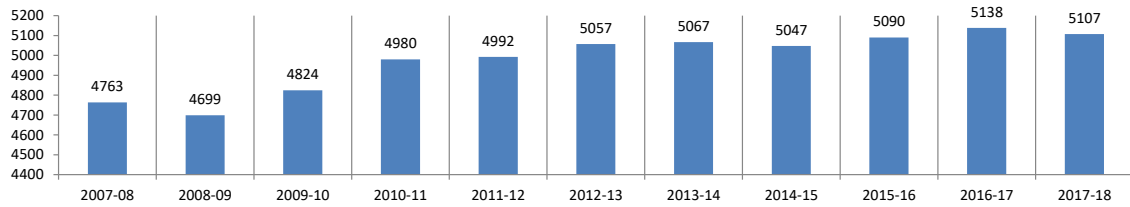
31

K | 1 | 2 | 3 | 4 | 5 | 6 | 7 | 8 | 9 | 10 | 11 | 12

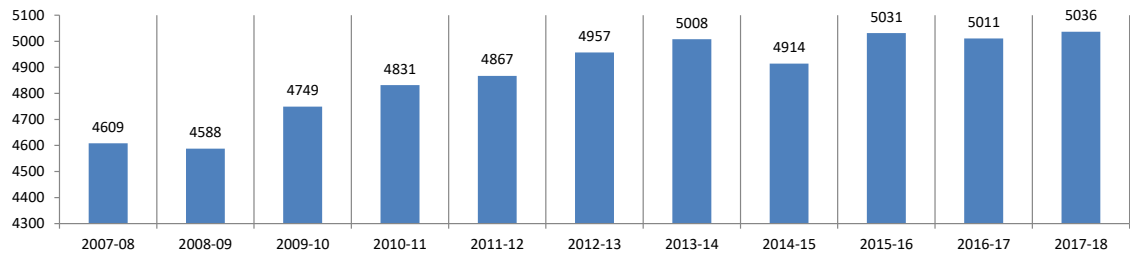
2016-17 % Change in Fall Enrollment /Est. EOY Adjusted ADM by Grade



Total K-12 Fall Seat Count from the Gender Ethnicity by Grade by District File of the MDE



Total K-12 Adjusted Average Daily Membership K-12 by Year



Fall Seat Count and EOY ADM for 2007-08 through 2017-18

