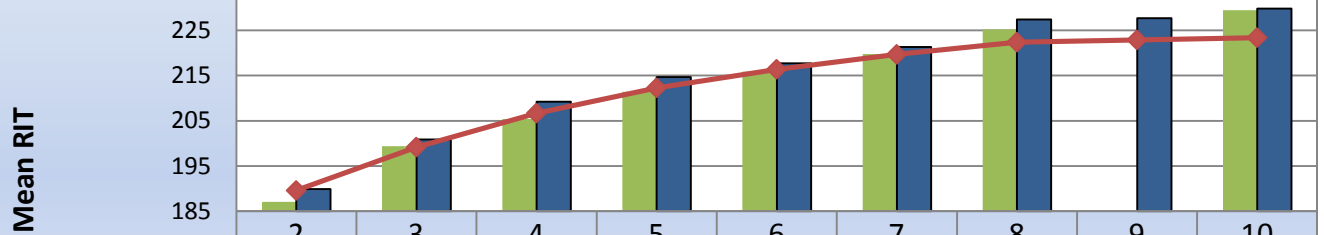
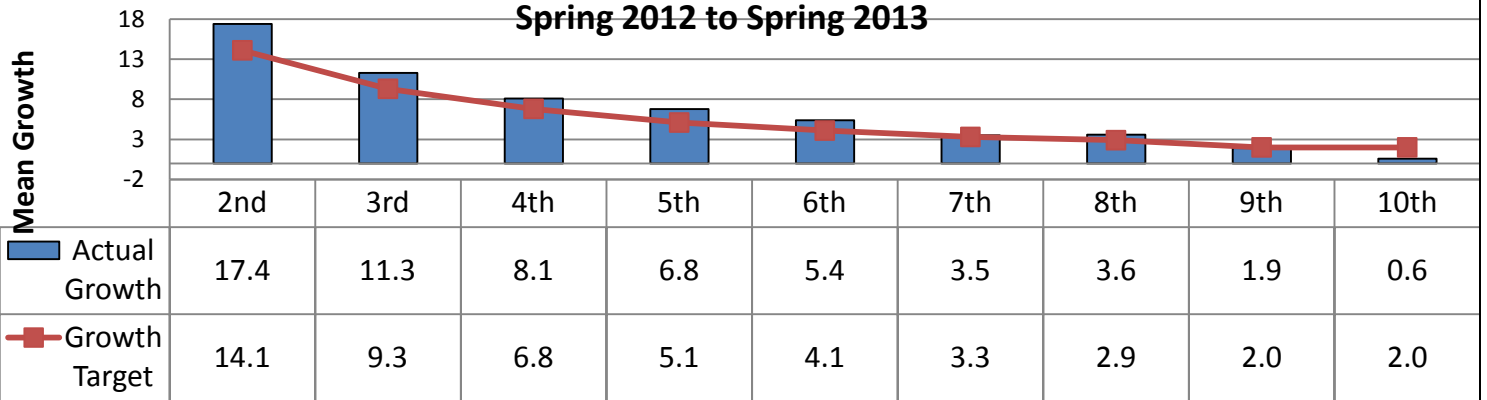


Bemidji Spring 2013 & 2014 NWEA MAP Reading RIT Compared to Norm

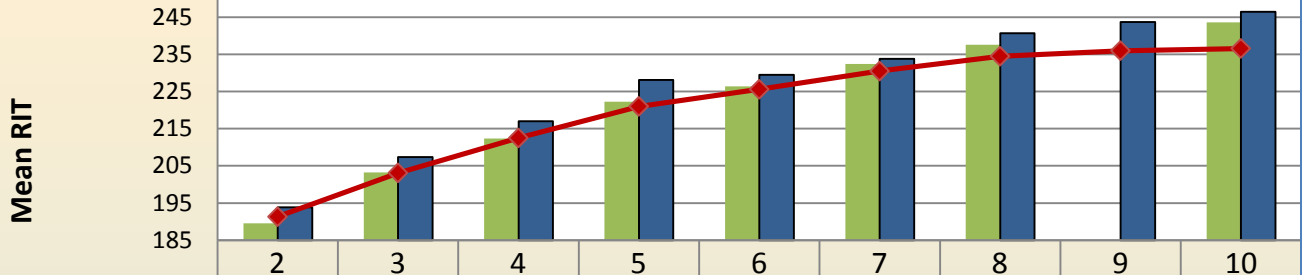


Bemidji 2013 Spring RIT	187.1	199.4	205.4	211.4	215.9	219.8	225.2		229.5
Bemidji 2014 Spring RIT	189.9	200.9	209.2	214.7	217.7	221.3	227.4	227.7	229.8
2011 Norm Mean RIT	189.6	199.2	206.7	212.3	216.4	219.7	222.4	222.9	223.4

Bemidji NWEA MAP Reading Growth Spring 2012 to Spring 2013



Bemidji Spring 2013 & 2014 NWEA MAP Math RIT Compared to Norm



Bemidji 2013 Spring RIT	189.5	203.2	212.4	222.3	226.4	232.4	237.6		243.6
Bemidji 2014 Spring RIT	193.8	207.4	217.0	228.1	229.5	233.8	240.7	243.7	246.5
2011 Norm Mean RIT	191.3	203.1	212.5	221.0	225.6	230.5	234.5	236.0	236.6

Bemidji NWEA MAP Math Growth Fall 2013 to Spring 2014

