

ENROLLMENT GRAPHS & TABLES

#####

BEMIDJI

31

Method

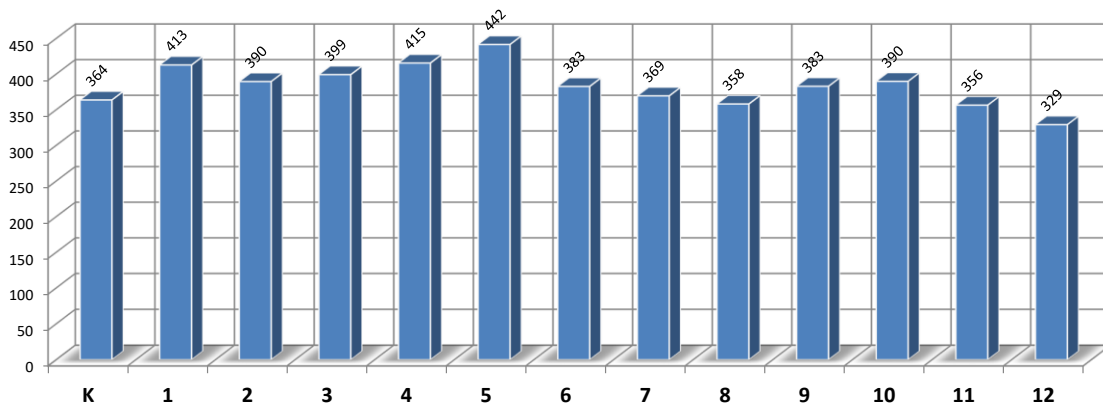
The selected History for Tables & Graphs was: **END OF YEAR A.D.M.**

with **4 Yr Wt N-Avg**

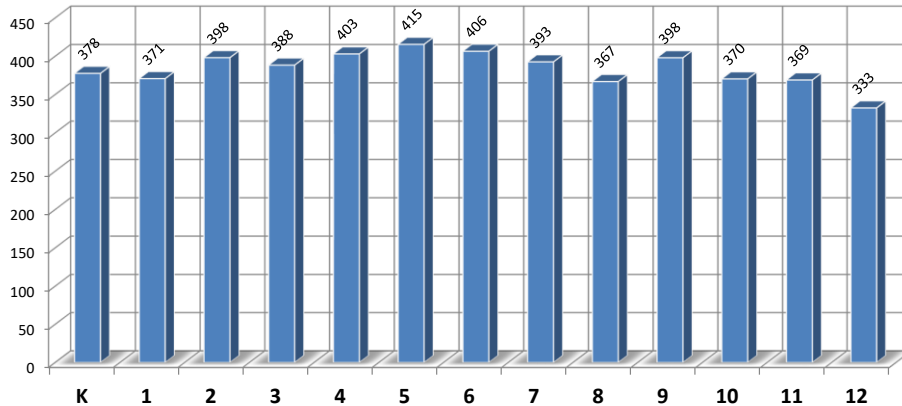
(16)

	Enrollment History - END-OF-YEAR ADM DATA							Enrollment Projections - END-OF-YEAR ADM DATA				
	2012-13	2013-14	2014-15	2015-16	2016-17	2017-18	2018-19	2019-20	2020-21	2021-22	2022-23	2023-24
EC	67.5	63.1	53.0	71.6	68.7	68.8	71.4	74.1	71.1	75.3	75.4	73.8
VPK	0.0	0.0	0.0	0.0	0.0	14.6	14.6	14.6	14.6	14.6	14.6	14.6
K	427.2	465.5	384.7	410.9	415.0	400.3	363.7	377.6	362.4	383.6	383.8	376.0
1	374.2	440.7	450.5	408.1	418.8	408.7	412.8	370.7	387.0	371.8	393.0	393.2
2	407.5	378.5	419.0	444.5	412.6	394.5	389.5	398.1	359.5	375.7	360.5	381.7
3	379.4	405.4	387.4	415.9	444.7	403.2	399.2	388.4	396.2	357.6	373.9	358.6
4	398.5	376.9	396.1	391.0	411.0	442.9	415.5	403.0	390.7	398.5	359.9	376.2
5	399.5	405.3	366.6	399.6	388.4	413.2	441.5	415.5	403.4	391.1	399.0	360.3
6	383.6	369.7	375.1	340.0	355.5	350.4	382.6	406.4	380.7	368.6	356.3	364.1
7	377.9	355.9	348.7	369.8	339.7	365.5	369.4	392.6	412.3	386.5	374.4	362.1
8	364.7	364.5	337.3	350.8	365.9	343.2	358.0	366.9	391.2	410.8	385.0	373.0
9	374.6	385.4	384.2	397.9	392.2	398.5	382.8	398.0	410.5	434.7	454.4	428.6
10	371.5	367.1	368.2	374.8	375.6	380.2	389.8	370.4	384.9	397.4	421.6	441.3
11	343.1	349.4	365.3	376.5	349.8	351.8	356.4	369.0	354.3	368.8	381.3	405.5
12	355.6	343.8	331.3	351.5	341.6	328.2	329.1	332.5	345.8	331.1	345.6	358.1
K-12	4957.3	5008.1	4914.3	5031.2	5010.6	4980.5	4990.5	4989.1	4978.7	4976.2	4988.7	4978.9
Pre K-12	5024.8	5071.2	4967.3	5102.7	5079.3	5063.9	5076.5	5077.9	5064.5	5066.2	5078.7	5067.4
% Change K-12		1.02%	-1.87%	2.38%	-0.41%	-0.60%	0.20%	-0.03%	-0.21%	-0.05%	0.25%	-0.20%

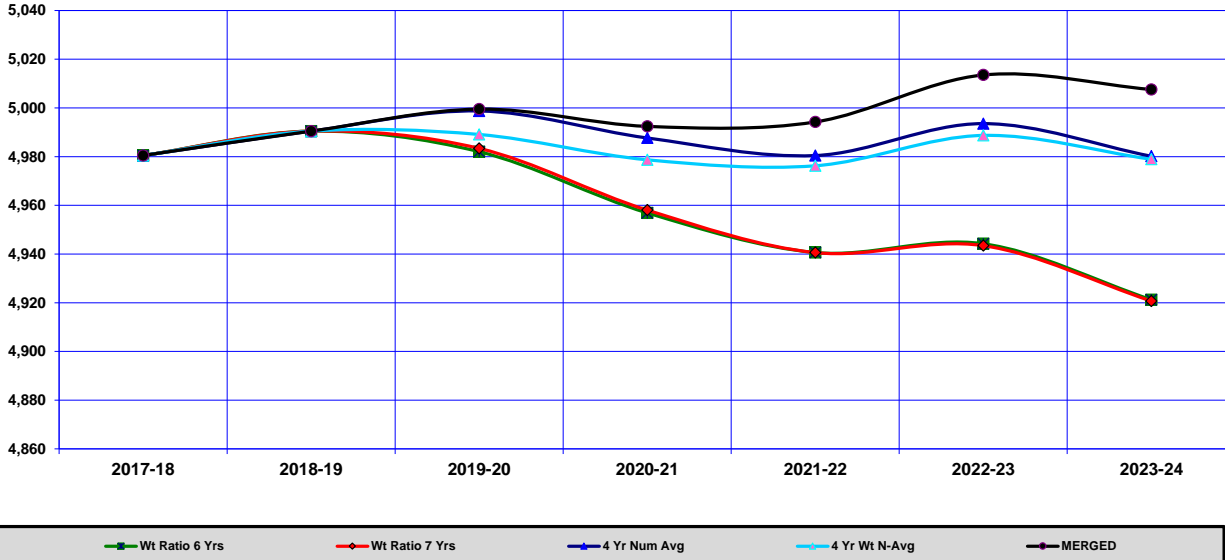
Enrollment by Grade for Current Year 2018-19



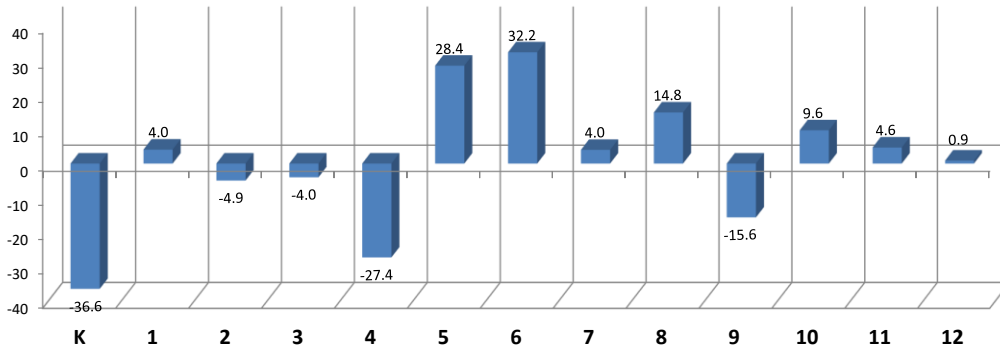
Enrollment by Grade for 1st Projection Year 2019-20



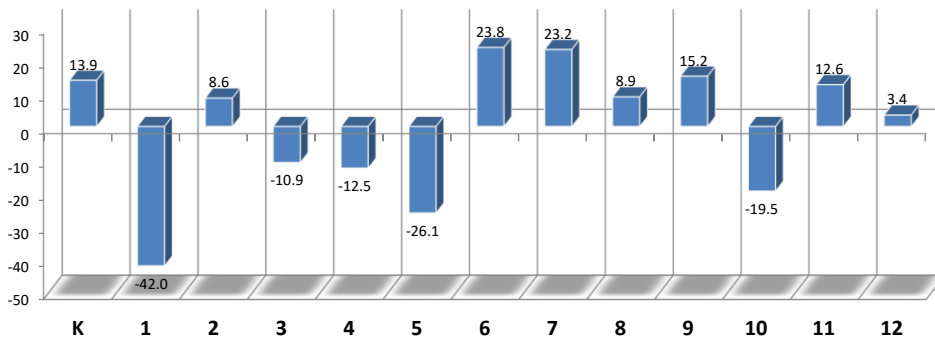
Enrollment Graph of Projections Selected on the DATA Worksheet.



Enrollment Change by Grade for the Current Year 2018-19



Enrollment Change by Grade for the 1st Projection Year 2019-20



ENPRO is the Enrollment Projection System of SchoolFinances.Com

Projecting Enrollment from Prior Enrollments is a Computational Process

To understand the components programmed into this system the user must understand Cohort Survival, Weighted Cohort Survival, and the Numerical Survival or Change Methodology

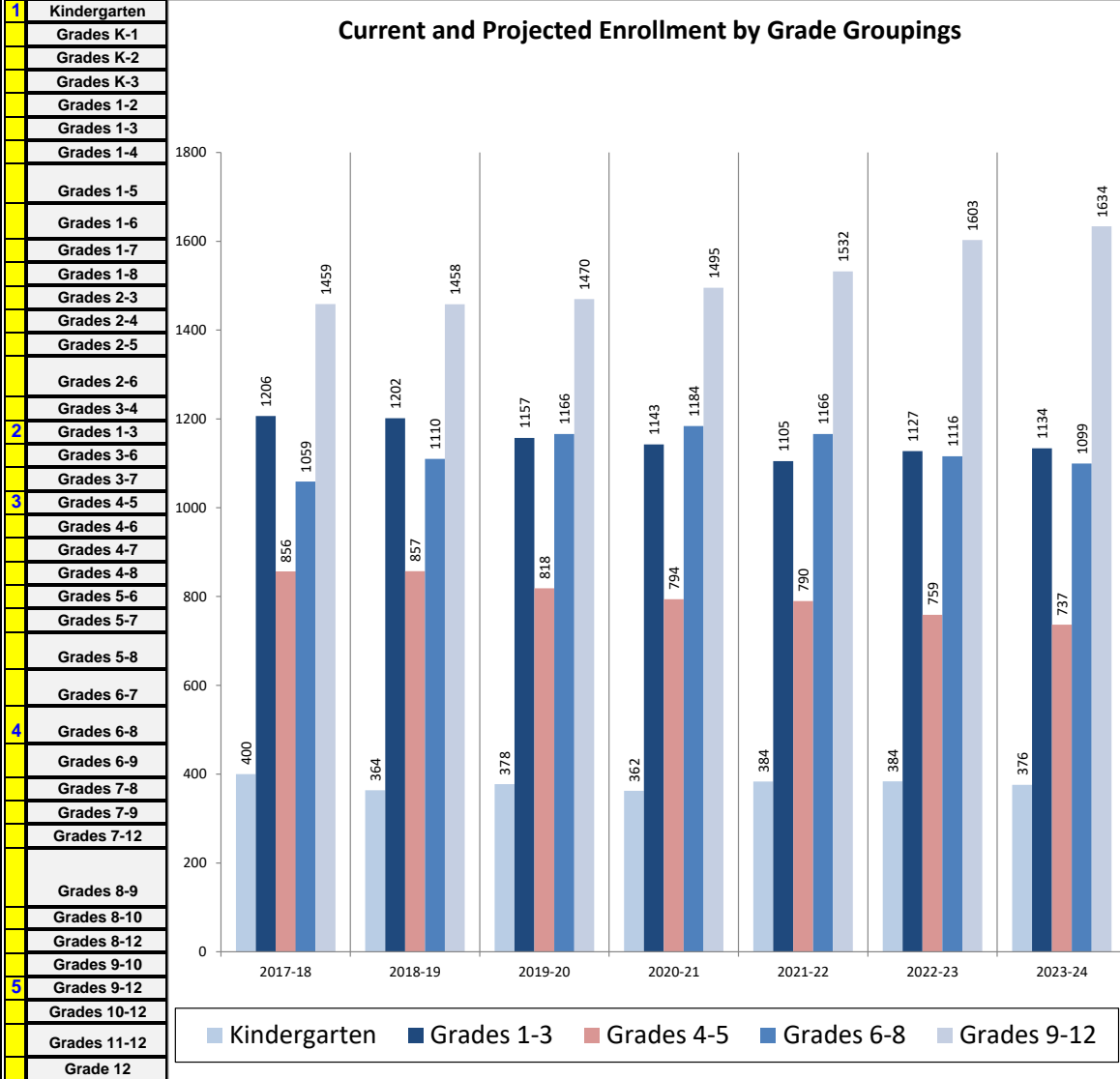
The Projection used in this result is for BEMIDJI 31
 The methodology used for this report is 4 Yr Wt N-Avg

The projection for K-12 anticipates an enrollment change of -1.4 From 2018-19 to 2019-20 (1) yr.
 The projection for K-12 anticipates an enrollment change of -11.6 From 2018-19 to 2023-24 (5) yrs.
 Enrollment Projections by District Grade Groupings present these changes by grouping.

Grade Groupings

2017-18	2018-19	2019-20	2020-21	2021-22	2022-23	2023-24
---------	---------	---------	---------	---------	---------	---------

Current and Projected Enrollment by Grade Groupings



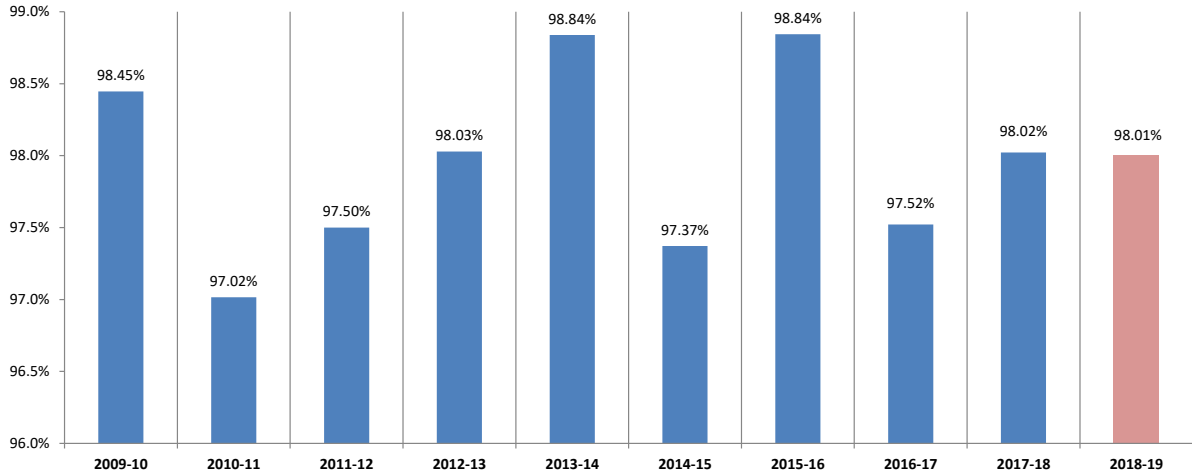
Grade Group	2017-18	2018-19	2019-20	2020-21	2021-22	2022-23	2023-24
1 Kindergarten	400.3	363.7	377.6	362.4	383.6	383.8	376.0
2 Grades 1-3	1,206.4	1,201.5	1,157.2	1,142.7	1,105.1	1,127.3	1,133.6
3 Grades 4-5	856.0	857.0	818.4	794.1	789.6	758.9	736.5
4 Grades 6-8	1,059.1	1,110.1	1,166.0	1,184.1	1,165.9	1,115.8	1,099.3
5 Grades 9-12	1,458.7	1,458.1	1,469.9	1,495.5	1,532.0	1,602.9	1,633.5
Total K-12	4,980.5	4,990.5	4,989.1	4,978.7	4,976.2	4,988.7	4,978.9

Data is taken from ENHIST DATA to Compute Change in Enrollment During the Year and Percent

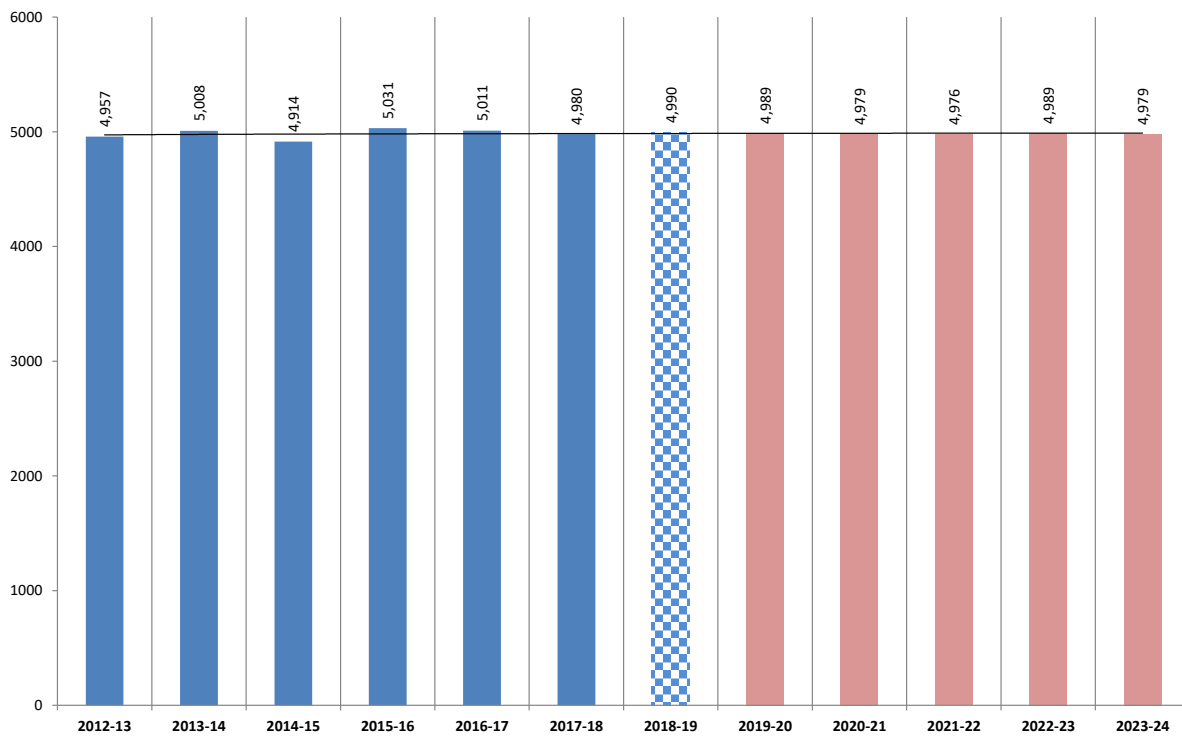
This percentage may be used in the FPM for estimating Change if Fall Enrollment is used for Projections

	2009-10	2010-11	2011-12	2012-13	2013-14	2014-15	2015-16	2016-17	2017-18	2018-19
Fall Data K-12	4,824	4,980	4,992	5,057	5,067	5,047	5,090	5,138	5,081	5,092
EOY ADM K-12	4,749.01	4,831.40	4,867.23	4,957.32	5,008.12	4,914.33	5,031.16	5,010.63	4,980.47	4,990.47
% Fall to End-of-Yr	98.45%	97.02%	97.50%	98.03%	98.84%	97.37%	98.84%	97.52%	98.02%	98.01%

Percent of End-of-Year Adjusted ADM to Fall Enrollment



K-12 ENROLLMENT HISTORY & PROJECTED TOTAL ENROLLMENT



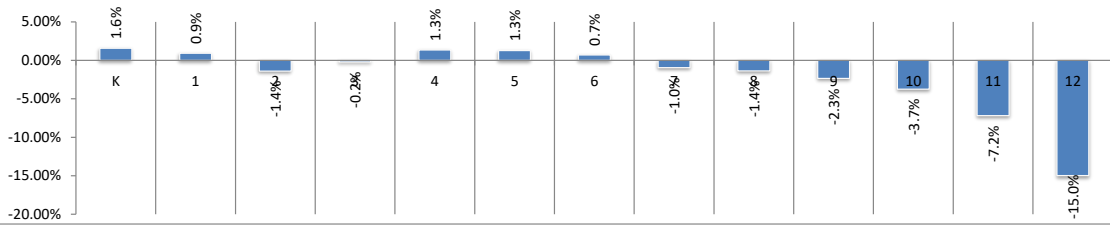
Enrollment History Graphs

These graphs are drawn from ENHIST and would not include Enrollment Adjustments

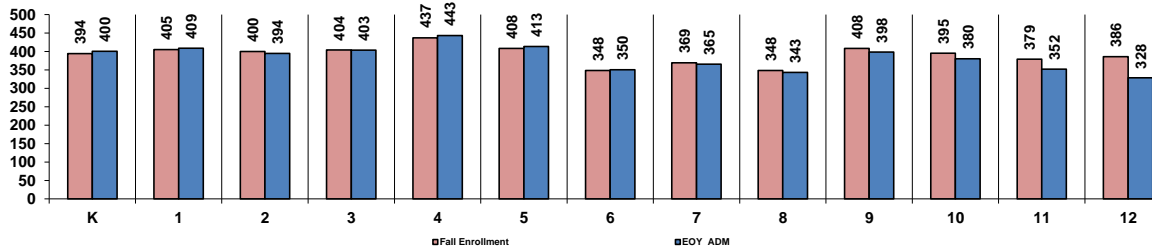
BEMIDJI

31

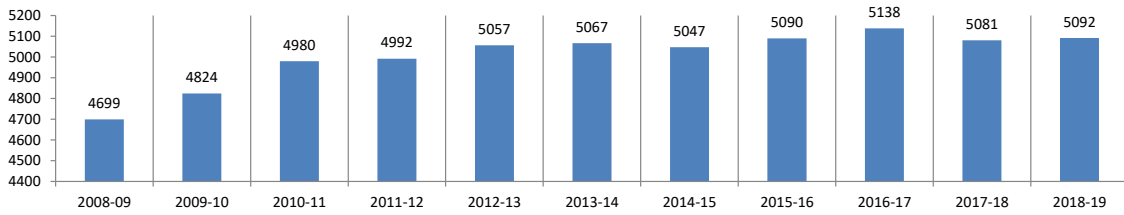
2017-18 % Change in Fall Enrollment /Est. EOY Adjusted ADM by Grade



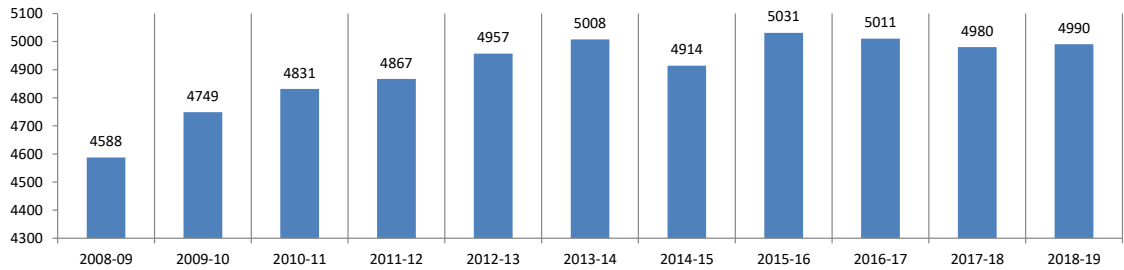
Fall Enrollment And End-of-Year ADM by Grade for 2017-18



Total K-12 Fall Seat Count from the Gender Ethnicity by Grade by District File of the MDE



Total K-12 Adjusted Average Daily Membership K-12 by Year



Fall Seat Count and EOY ADM for 2008-09 through 2018-19

