

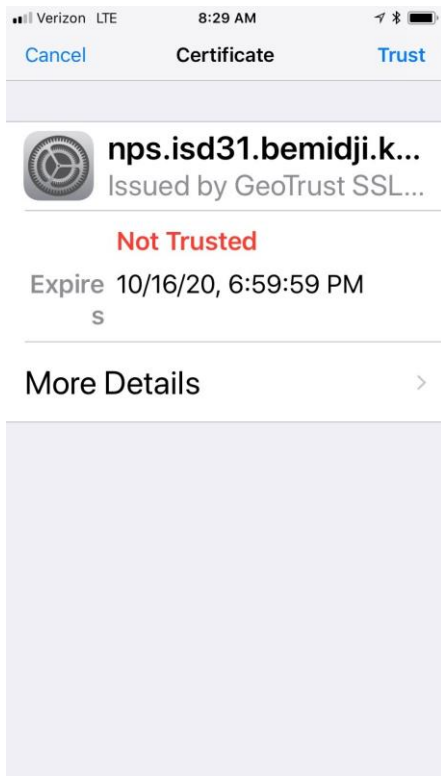
## Wireless Network Access

When connecting to the wireless network, staff will choose the “ISD31\_Net” network. You should be prompted for a username/password. This will be your “Firstname\_Lastname” and current Active Directory password. Your device should retain this information until such time as you either reset your device, or your password changes.

There will be a few nuances based upon the type of device you are using. The process of connecting to the network utilizes a security certificate that each device has its own way of handling. Please make note of the following based upon your device type:

### iPhone or iPad:

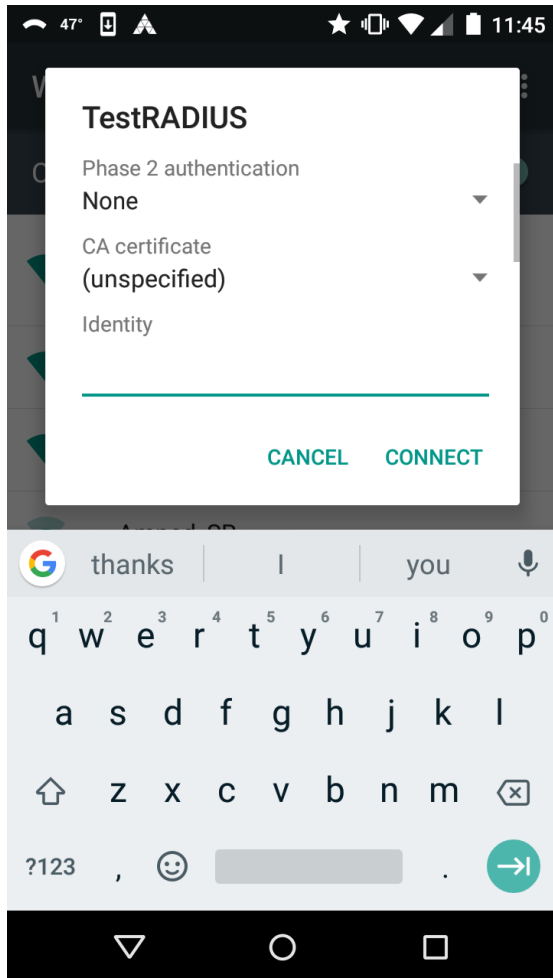
When connecting with an iPhone or iPad you will get a certificate warning:



Just click “Trust” in the upper right to connect.

## Android Phone:

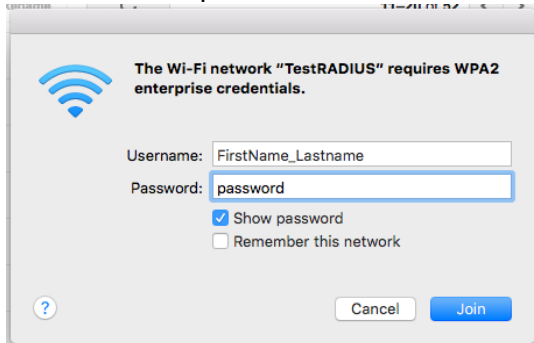
After choosing "ISD31\_Net" you will see a screen similar to the following:



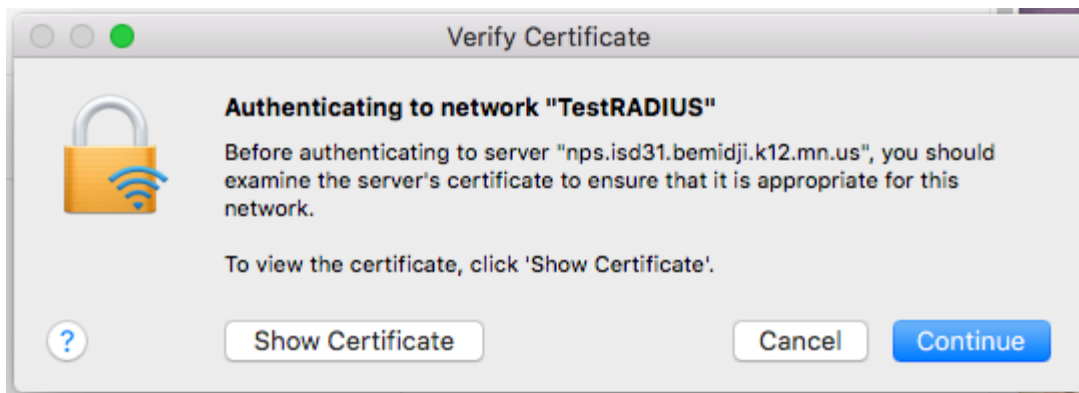
You don't need to select anything for Phase 2 Authentication or CA Certificate. Simply enter your Username in the "**Identity**" field and your password in the "**Password**" field (you may have to tap the tab key twice to see the "Password" field).

## Mac Computer:

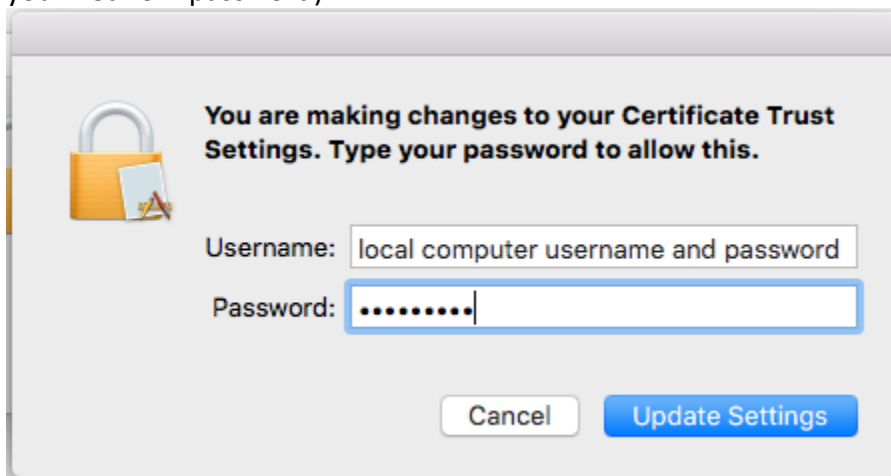
When you connect to "ISD31\_Net" from a Mac you will first be asked to enter your Network username and password.



This is your Active Directory username and password. Then (and this should only happen once) you will get a message suggesting you examine the certificate... just click "Continue":

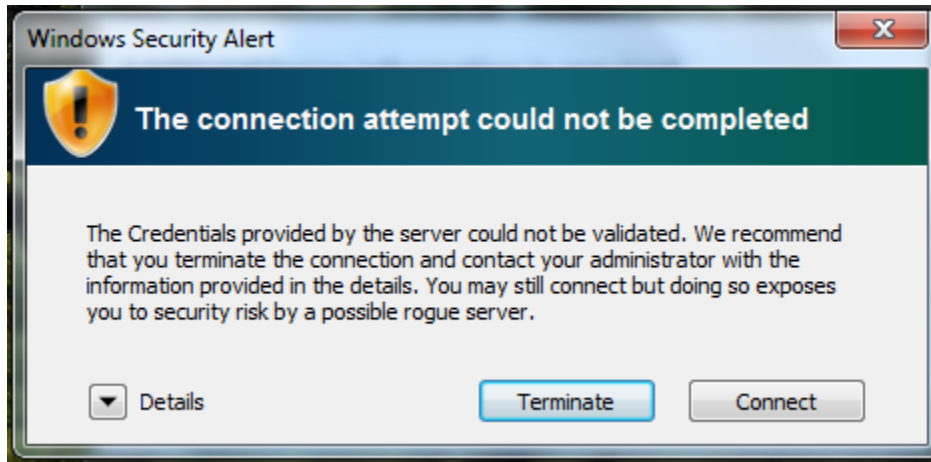


Finally, you will be asked to add the certificate to the certificate trust settings on your computer. This requires the **local** username and password you use for just this computer (not your network password):



## Windows 7:

After selecting “ISD31\_Net” on a Windows 7 laptop you will be able to log in with your active directory username and password but will get the following notice:



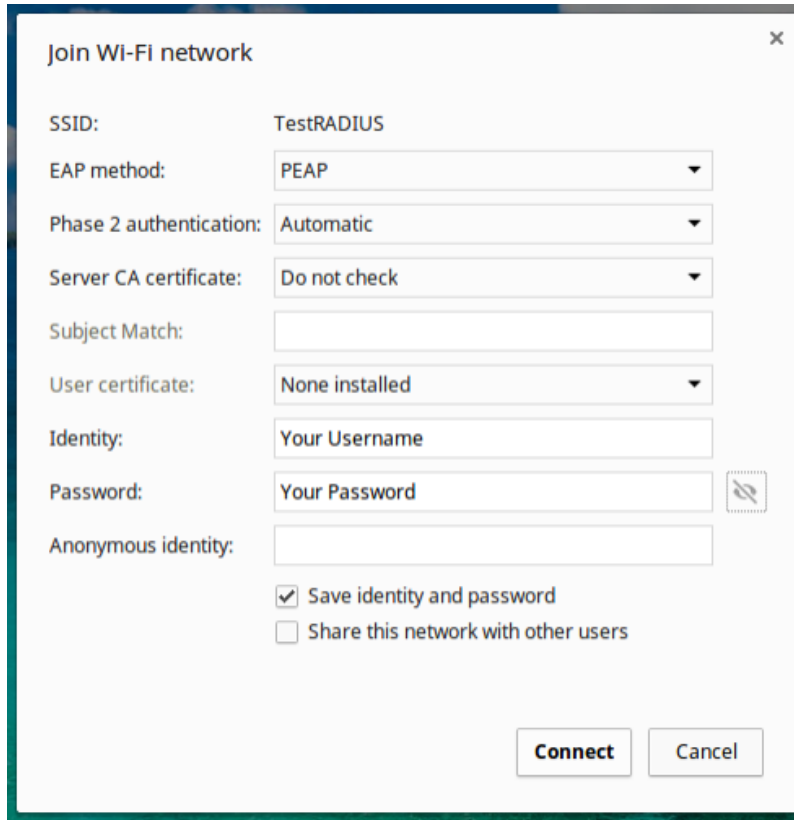
You can safely click “Connect” and will then be connected to the network.

## Windows 10:

Simply choose the “ISD31\_Net” network option and log in with your username and password.

## ChromeBook:

When connecting to the wireless network from a Chrome device you will see the following dialog:



Join WI-FI network

SSID: TestRADIUS

EAP method: PEAP

Phase 2 authentication: Automatic

Server CA certificate: Do not check

Subject Match:

User certificate: None installed

Identity: Your Username

Password: Your Password

Anonymous identity:

Save identity and password

Share this network with other users

Connect Cancel

For “EAP Method” choose “PEAP”. For “Server CA certificate” choose “Do not check”. Then enter your username and password in the Identity and Password fields respectively. Then click Connect.